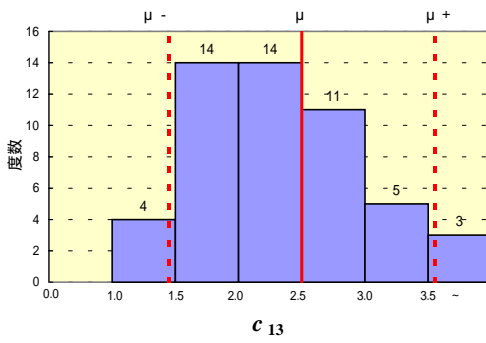
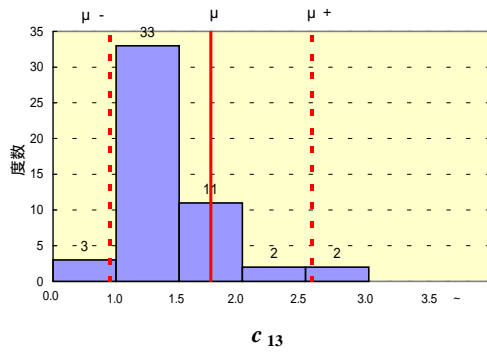
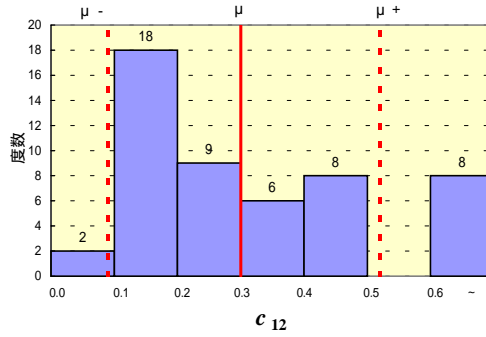
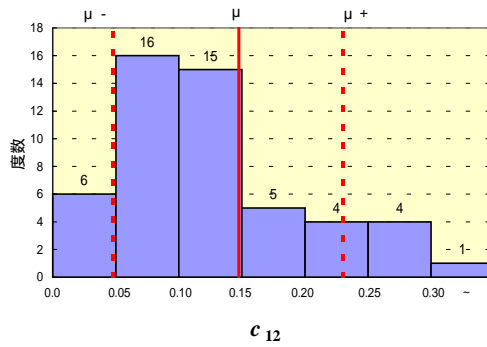
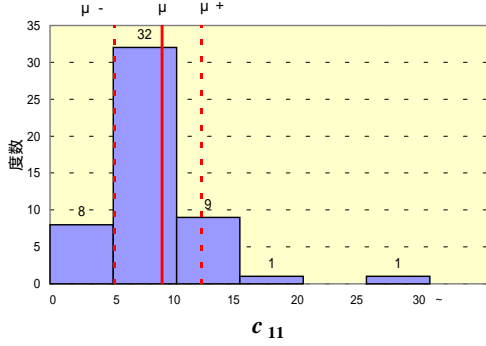
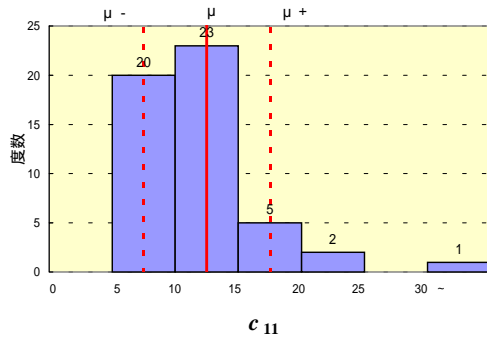
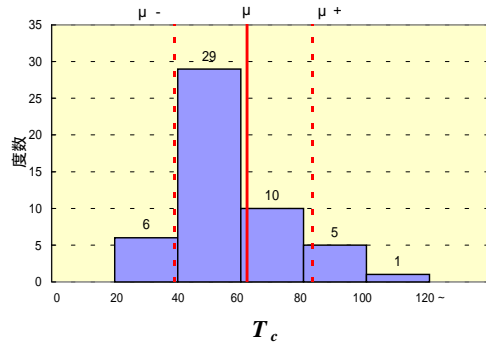
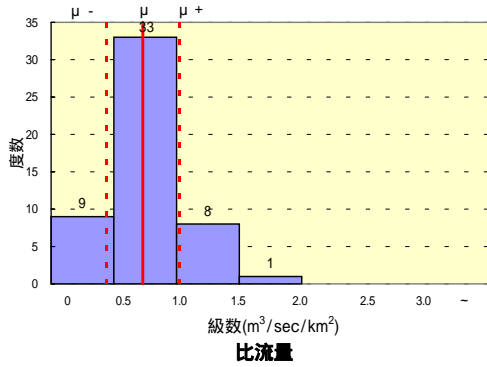


天塩川水系 (51洪水例)

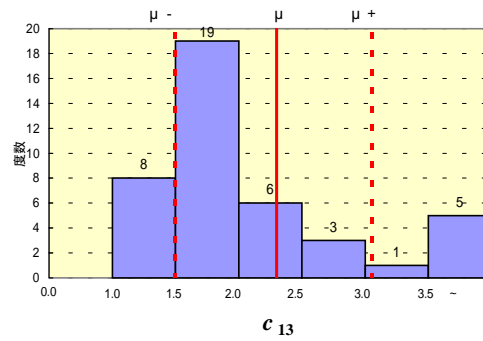
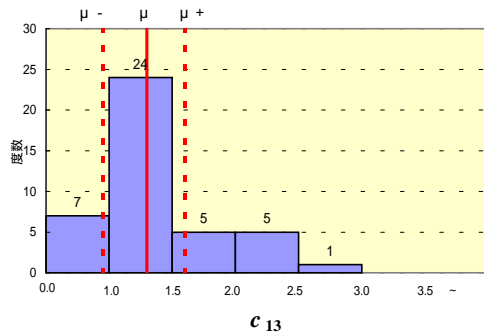
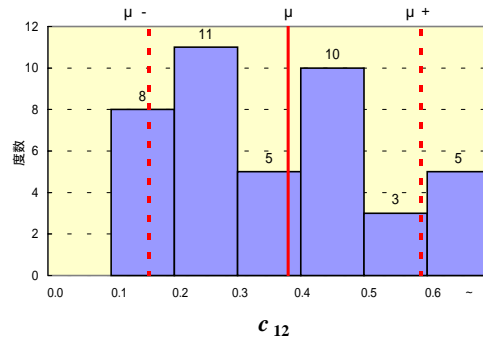
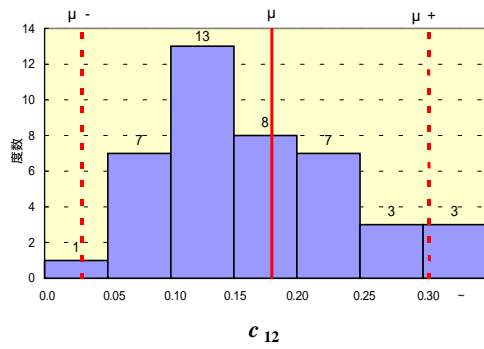
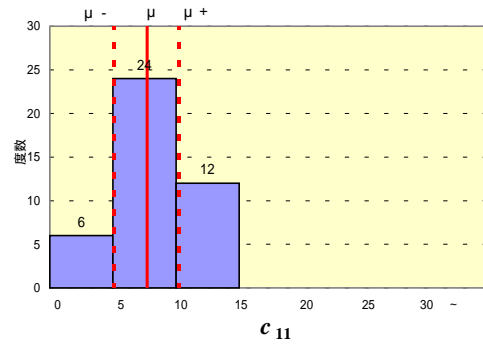
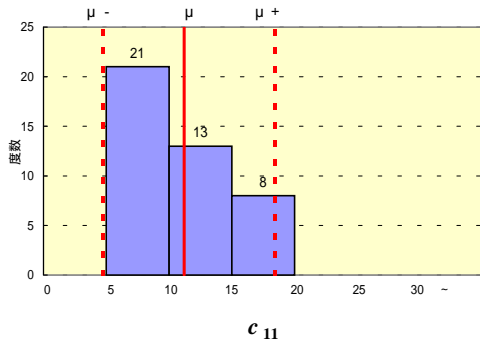
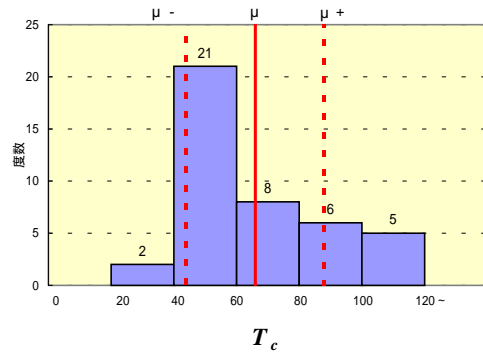
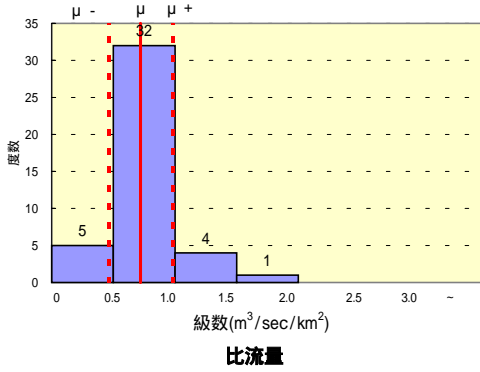


1段タンク型モデル定数

2段タンク型モデル定数

図3.17 各水系における1段・2段タンク型モデル定数の比較

清滑川水系 (42洪水例)

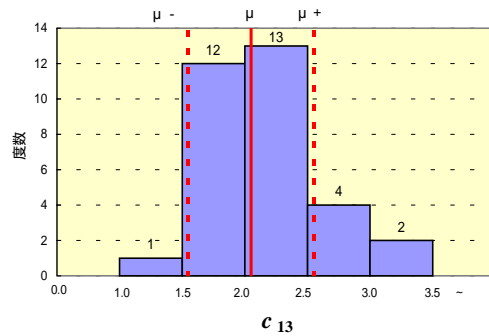
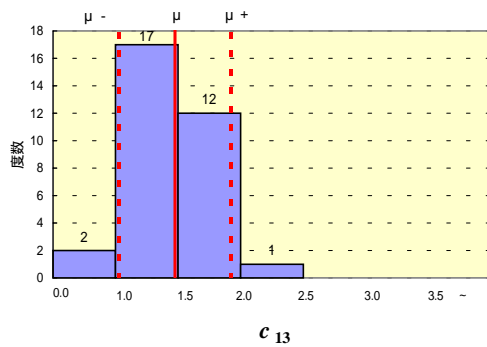
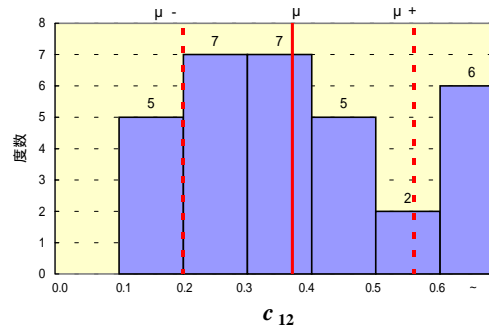
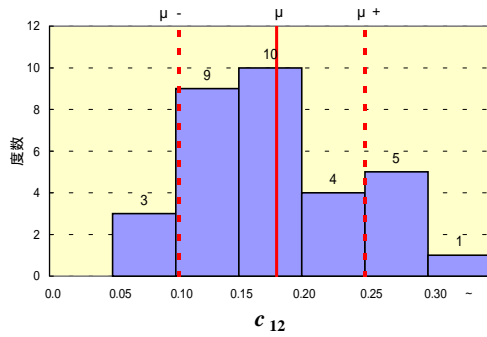
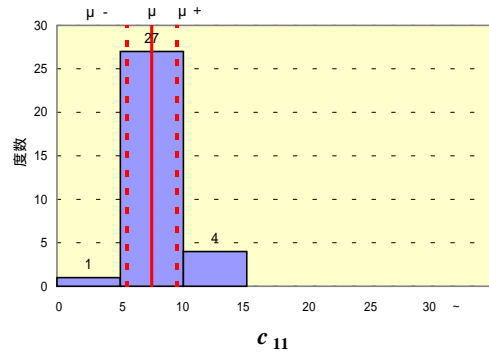
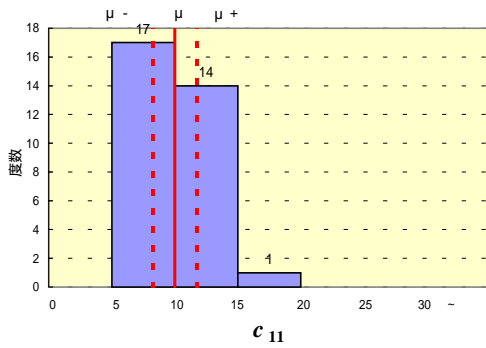
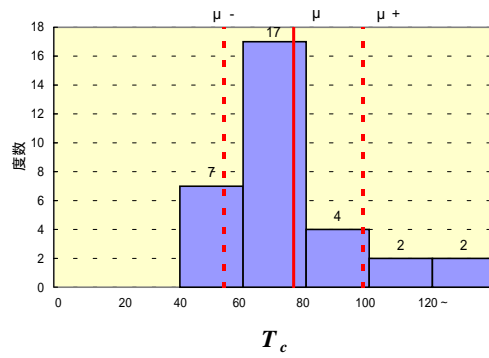
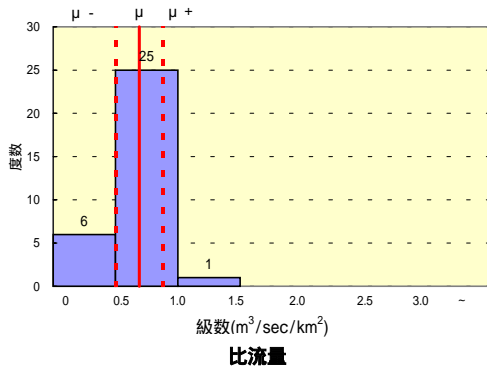


1段タンク型モデル定数

2段タンク型モデル定数

図3.17 各水系における1段・2段タンク型モデル定数の比較(つづき)

湧別川水系 (32洪水例)

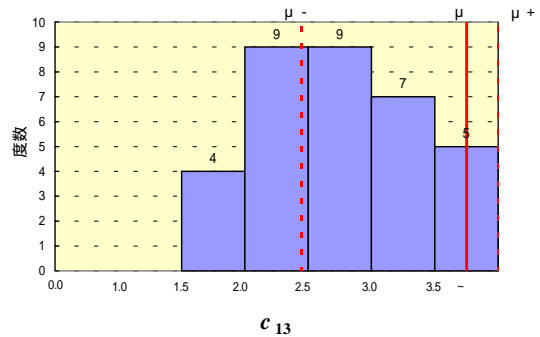
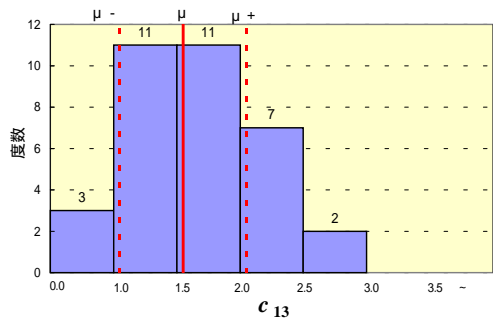
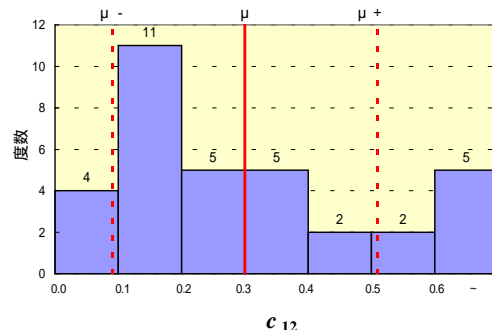
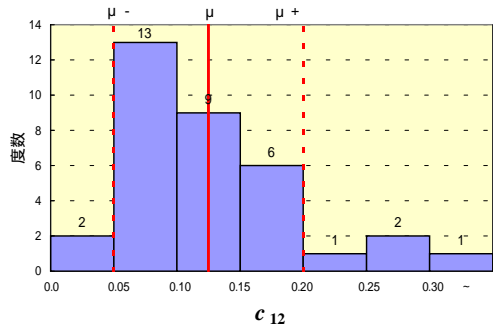
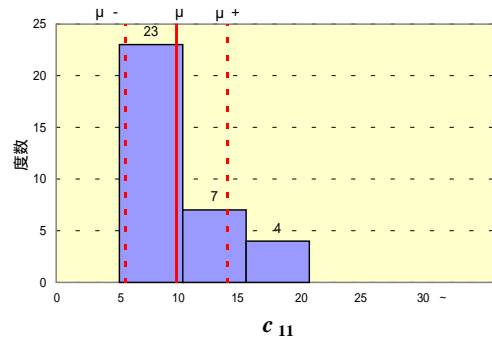
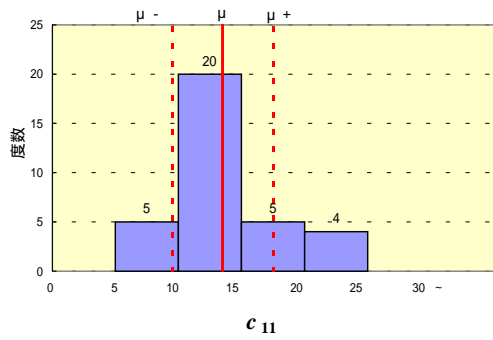
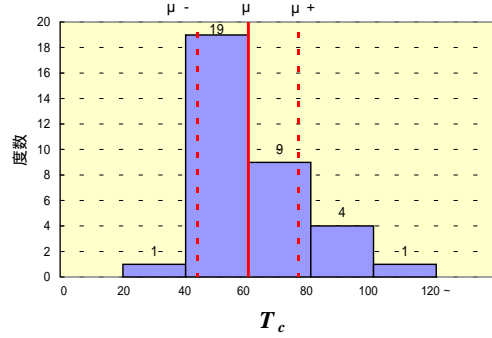
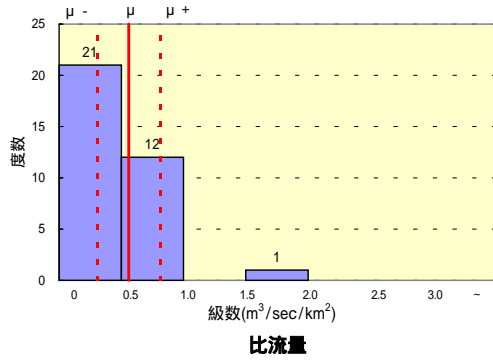


1段タンク型モデル定数

2段タンク型モデル定数

図3.17 各水系における1段・2段タンク型モデル定数の比較(つづき)

常呂川水系 (34洪水例)

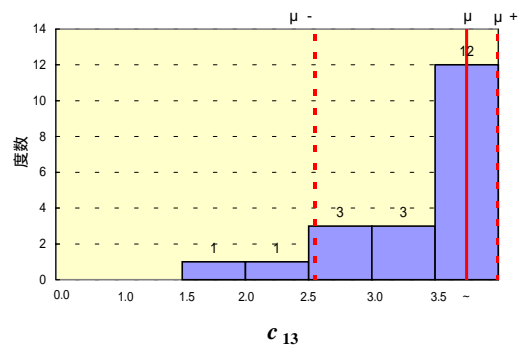
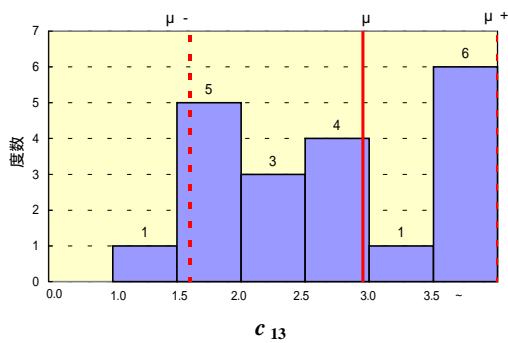
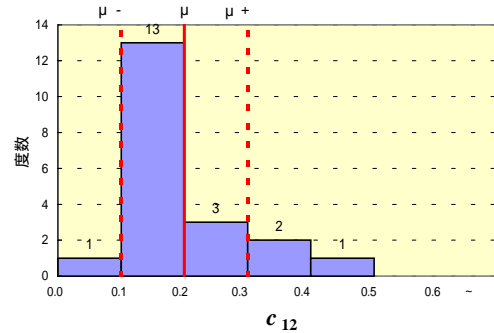
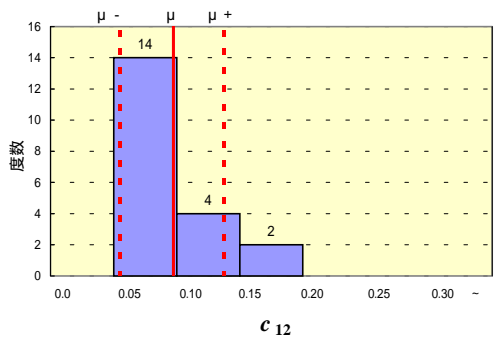
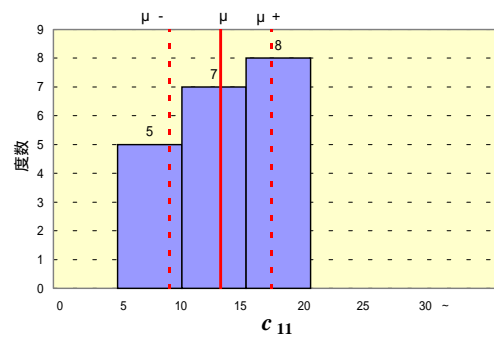
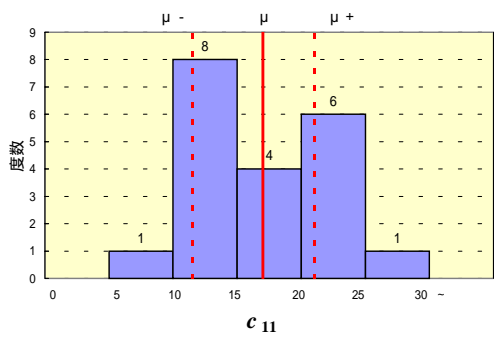
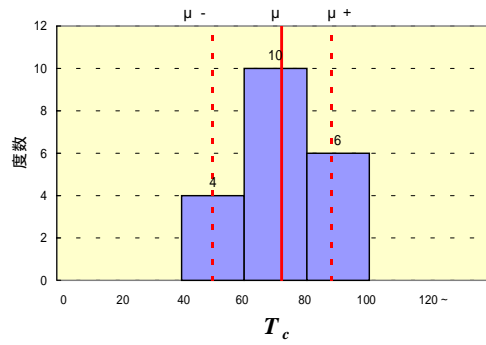
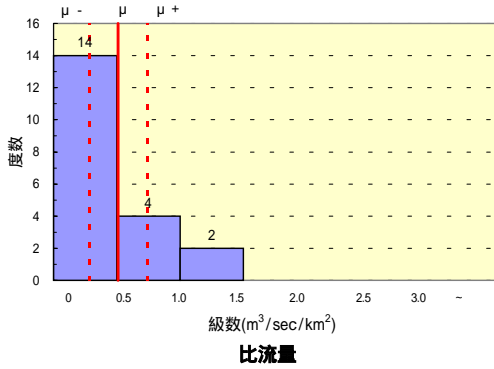


1段タンク型モデル定数

2段タンク型モデル定数

図3.17 各水系における1段・2段タンク型モデル定数の比較(つづき)

網走川水系 (20洪水例)

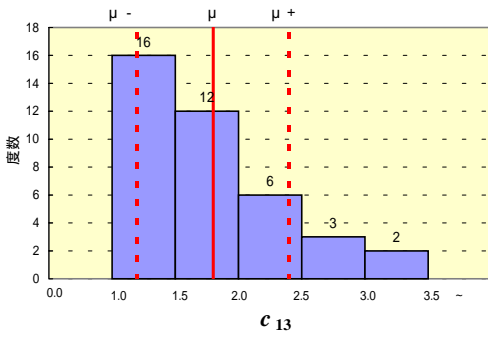
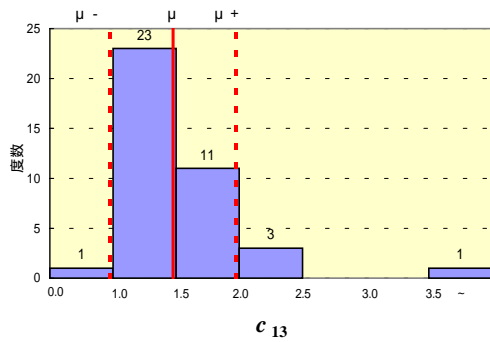
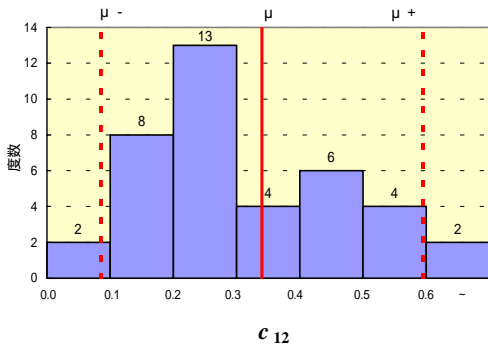
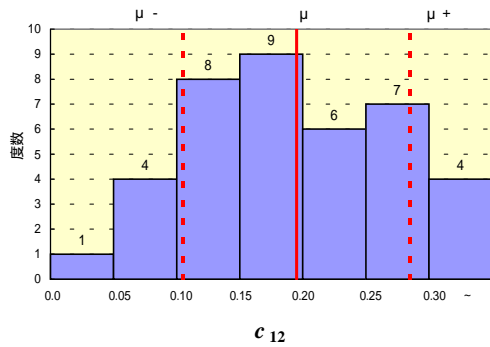
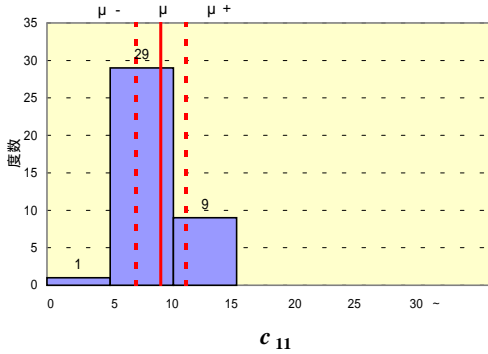
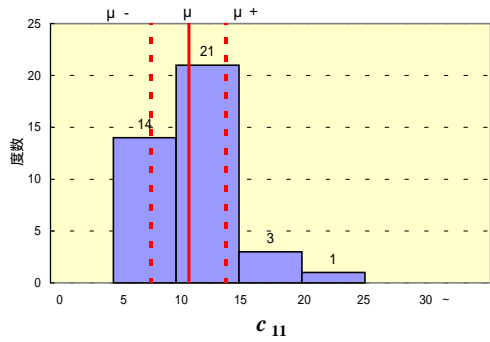
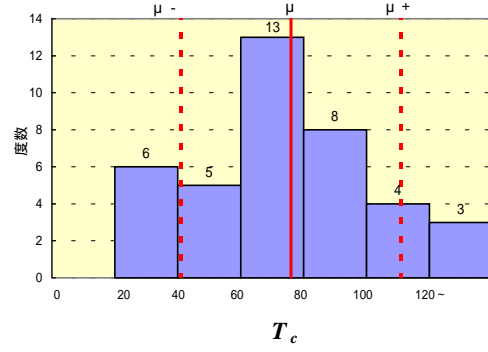
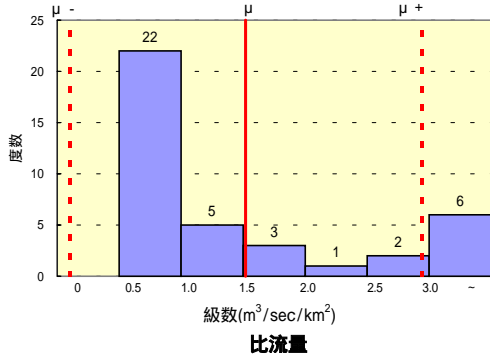


1段タンク型モデル定数

2段タンク型モデル定数

図3.17 各水系における1段・2段タンク型モデル定数の比較(つづき)

留萌川水系 (39洪水例)



1段タンク型モデル定数

2段タンク型モデル定数

図3.17 各水系における1段・2段タンク型モデル定数の比較(つづき)

石狩川水系 (72洪水例)

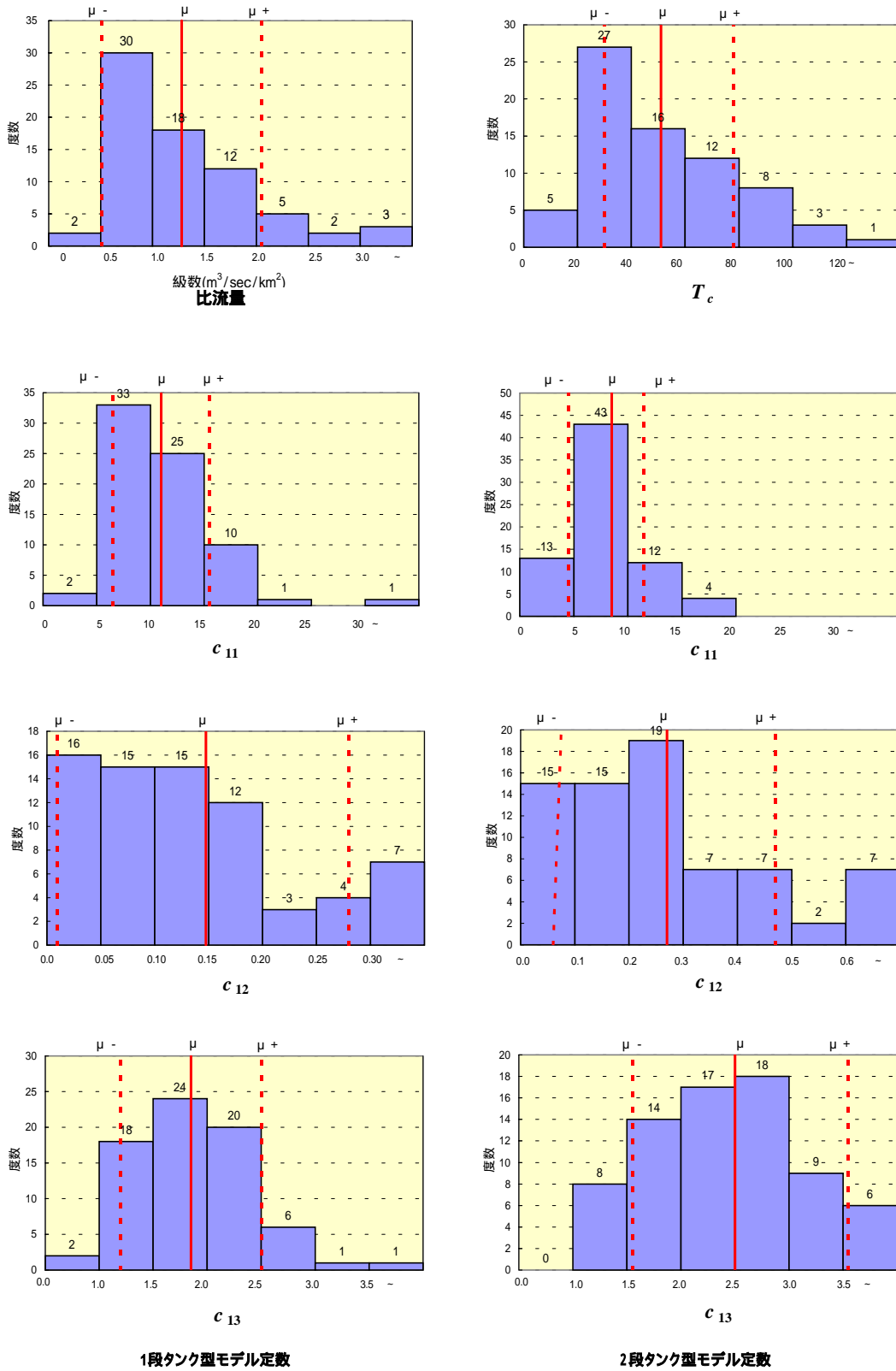


図3.17 各水系における1段・2段タンク型モデル定数の比較(つづき)

尻別川水系 (69洪水例)

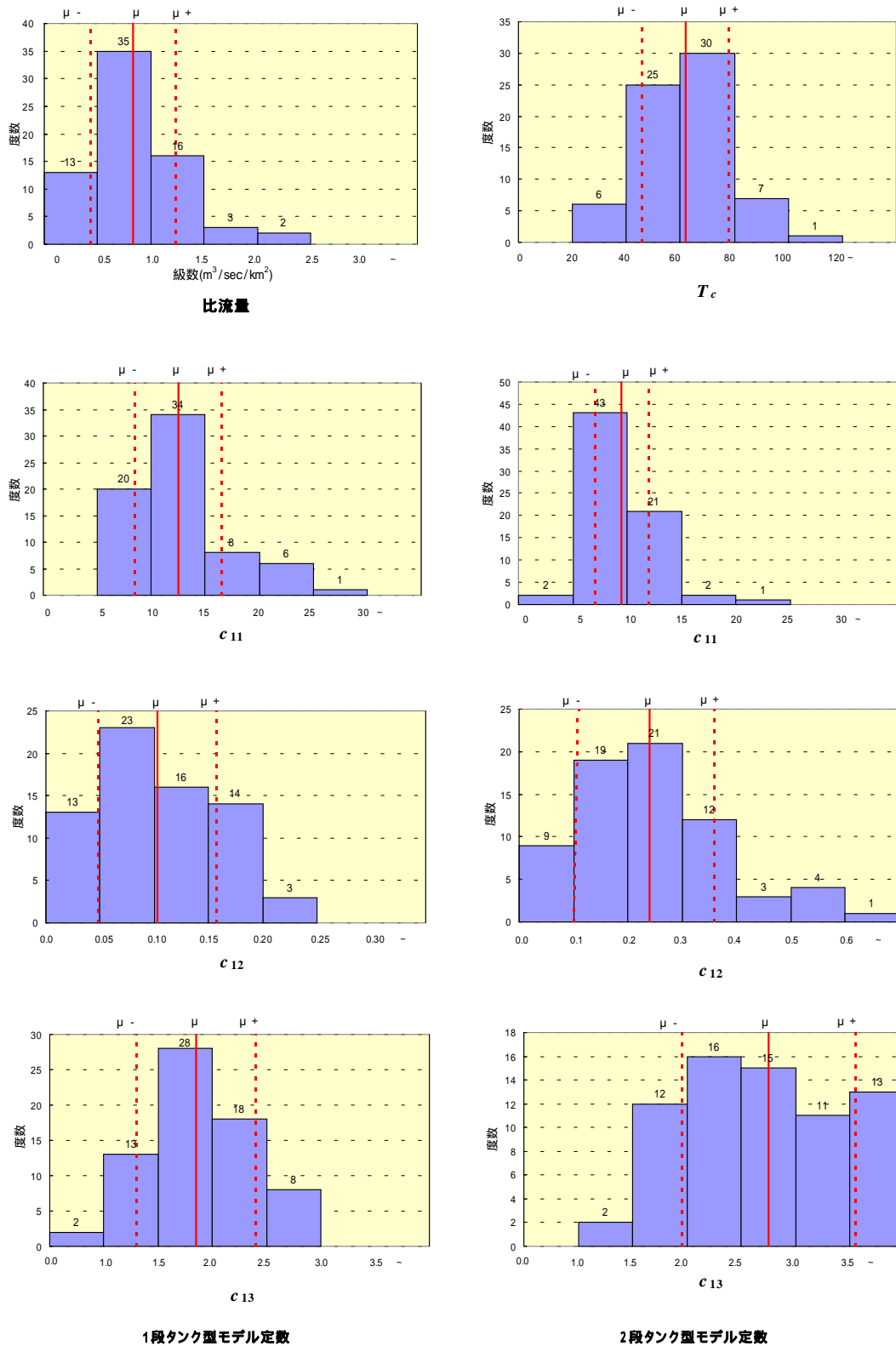


図3.17 各水系における1段・2段タンク型モデル定数の比較(つづき)

後志利別川水系 (65洪水例)

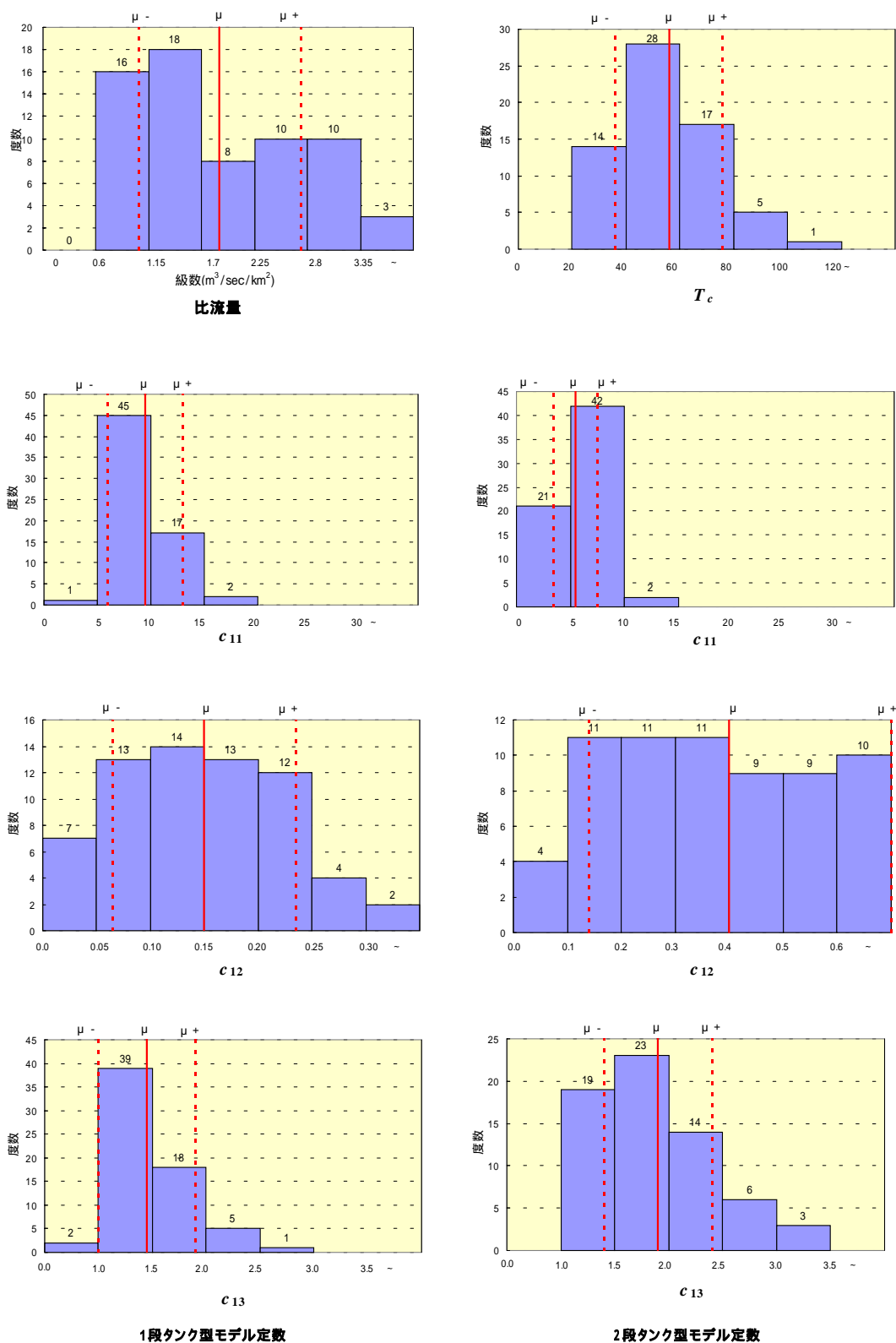


図3.17 各水系における1段・2段タンク型モデル定数の比較(つづき)

鶴川水系 (34洪水例)

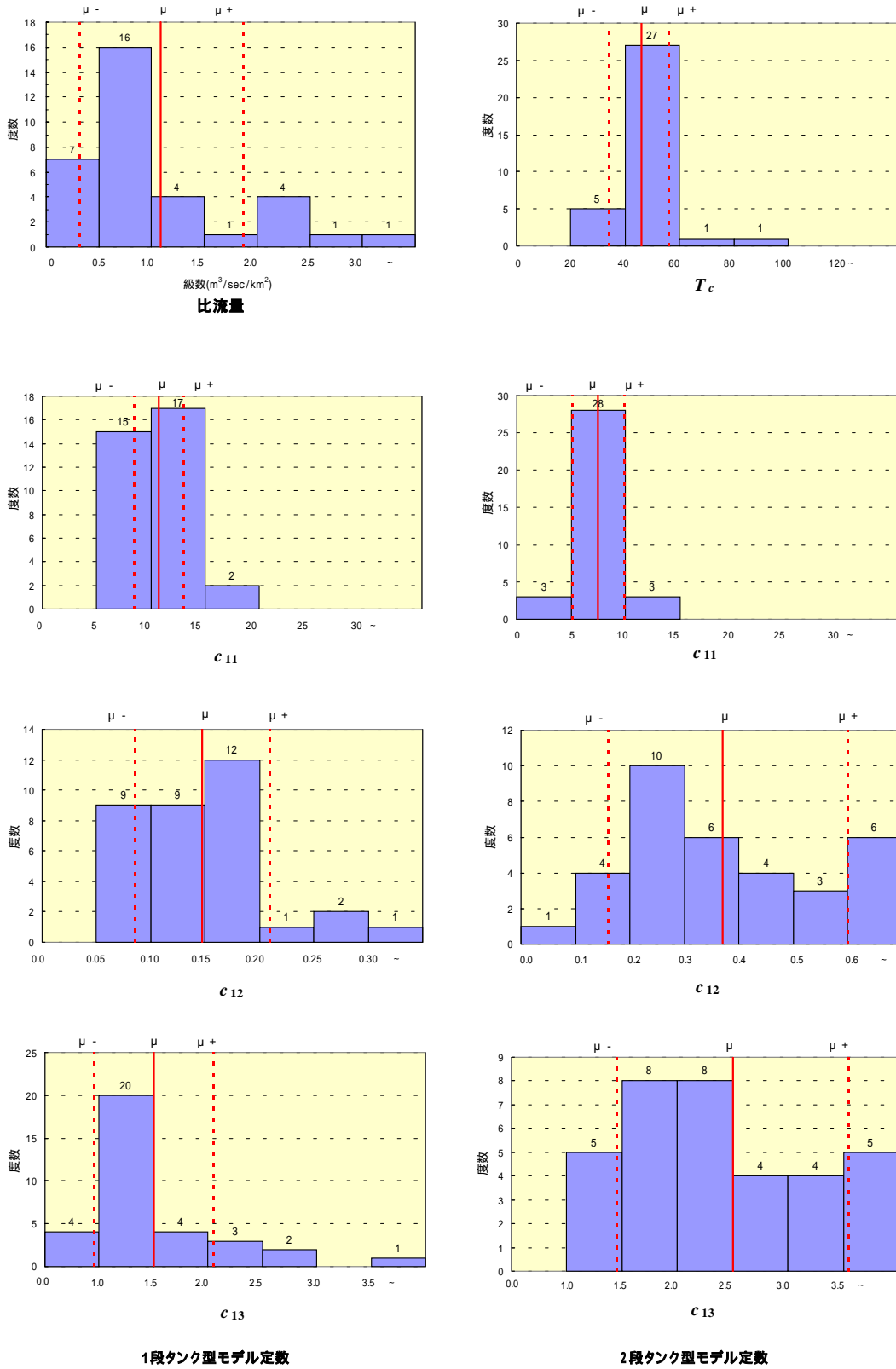


図3.17 各水系における1段・2段タンク型モデル定数の比較(つづき)

沙流川水系 (60洪水例)

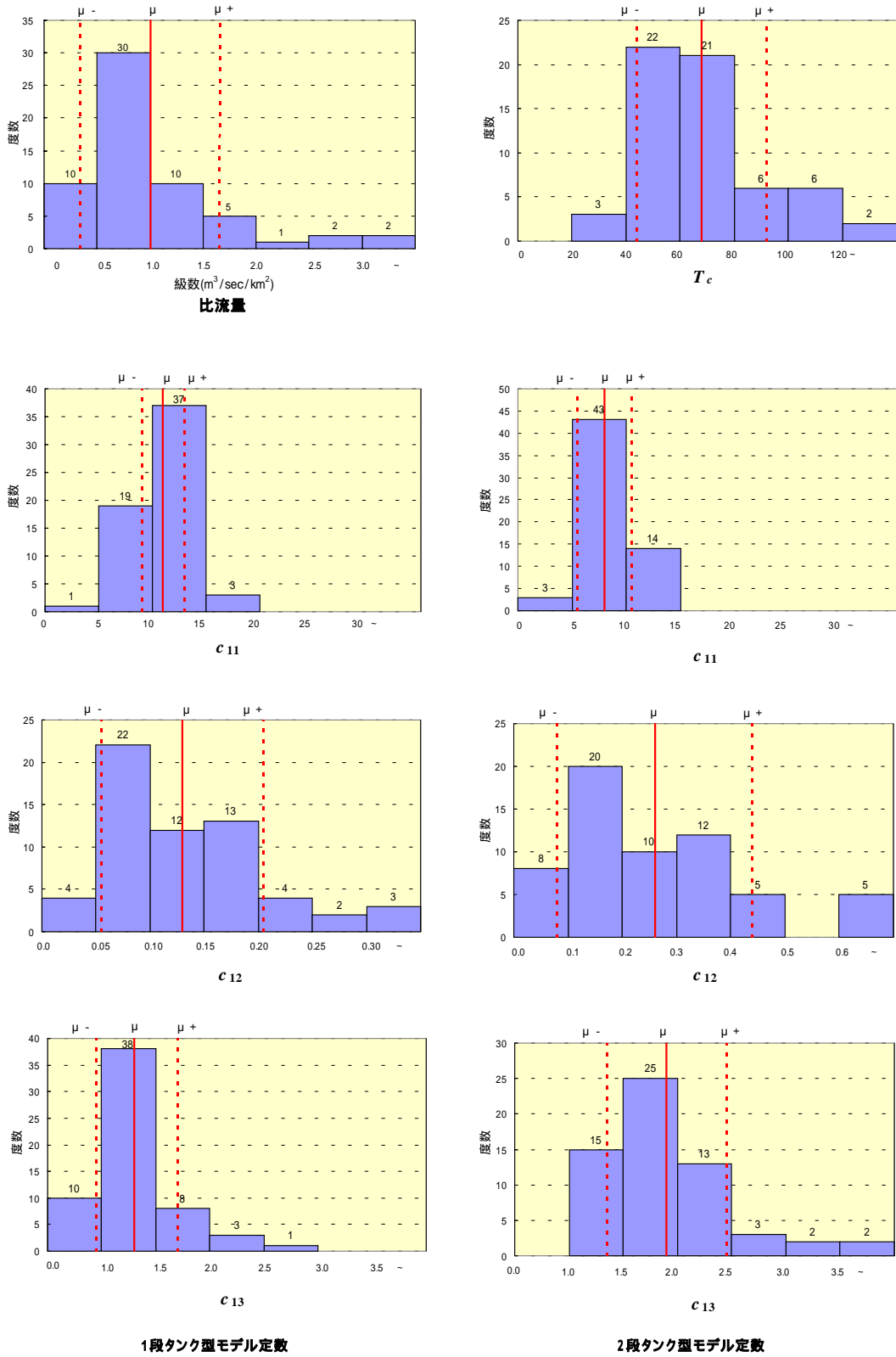
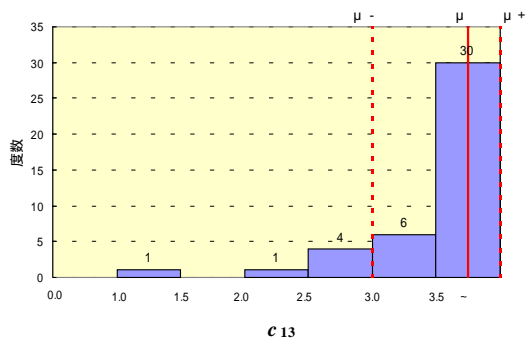
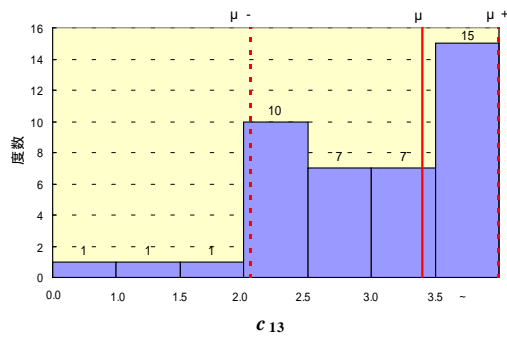
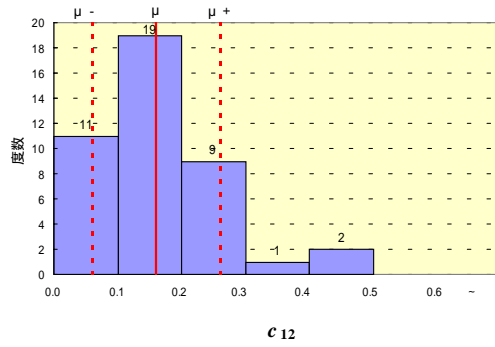
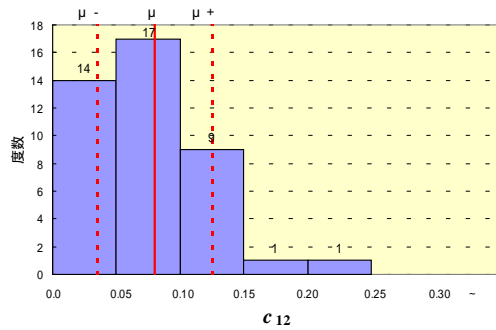
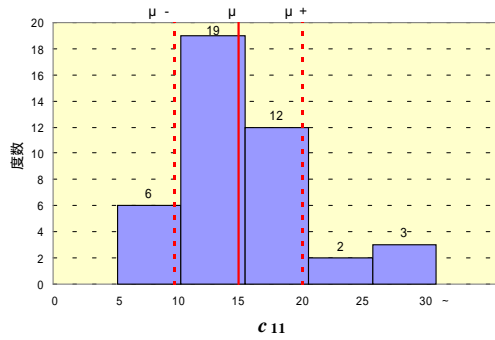
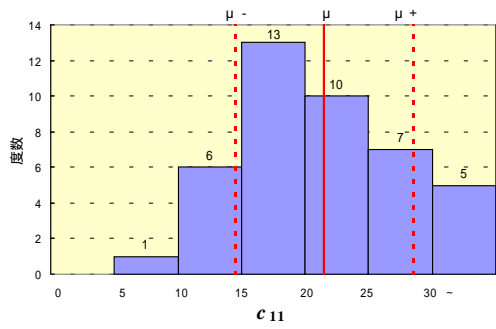
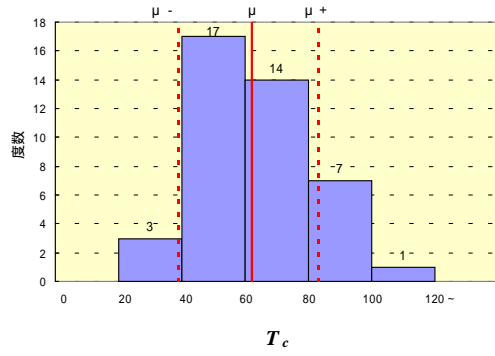
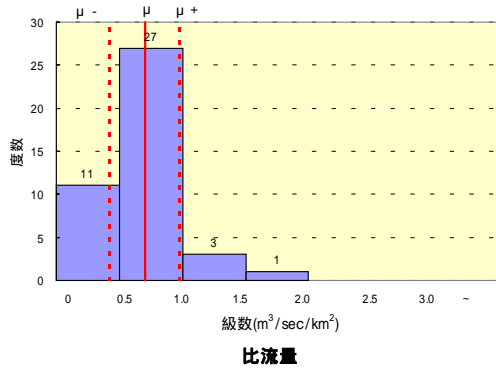


図3.17 各水系における1段・2段タンク型モデル定数の比較(つづき)

釧路川水系 (42洪水例)

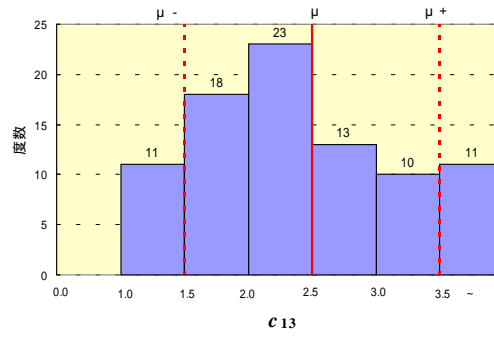
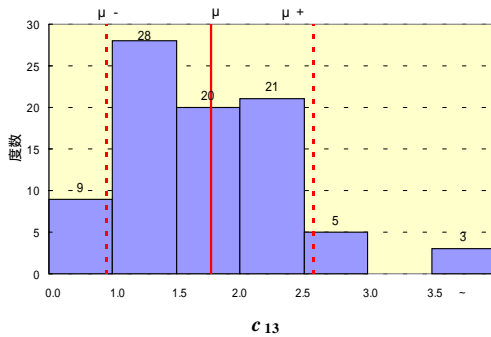
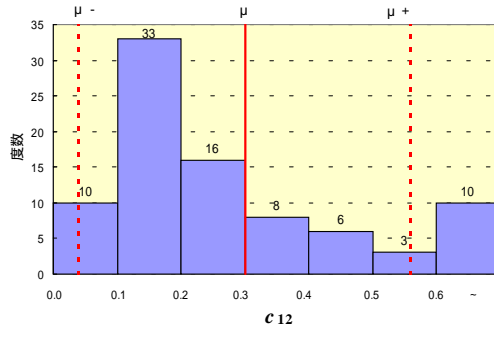
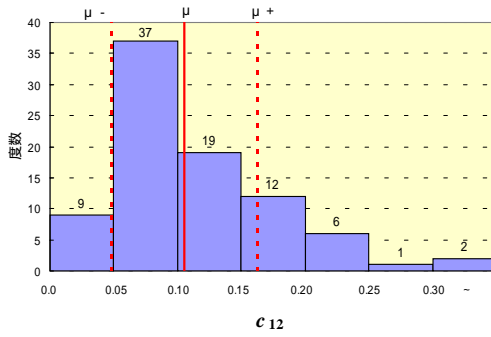
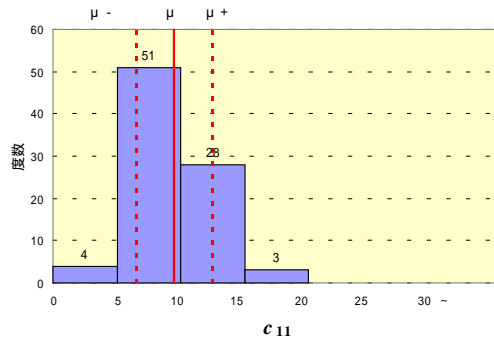
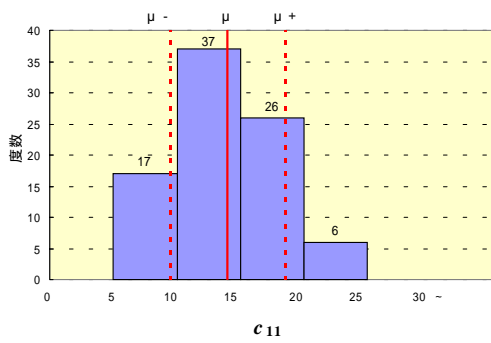
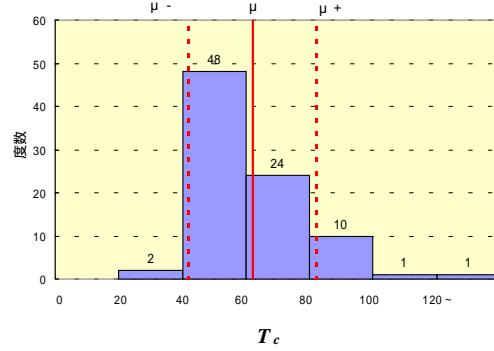
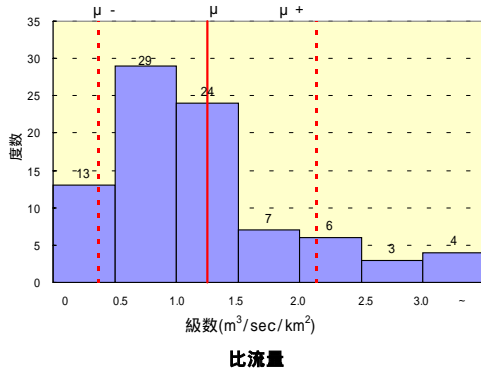


1段タンク型モデル定数

2段タンク型モデル定数

図3.17 各水系における1段・2段タンク型モデル定数の比較(つづき)

十勝川水系 (86洪水例)



1段タンク型モデル定数

2段タンク型モデル定数

図3.17 各水系における1段・2段タンク型モデル定数の比較(つづき)