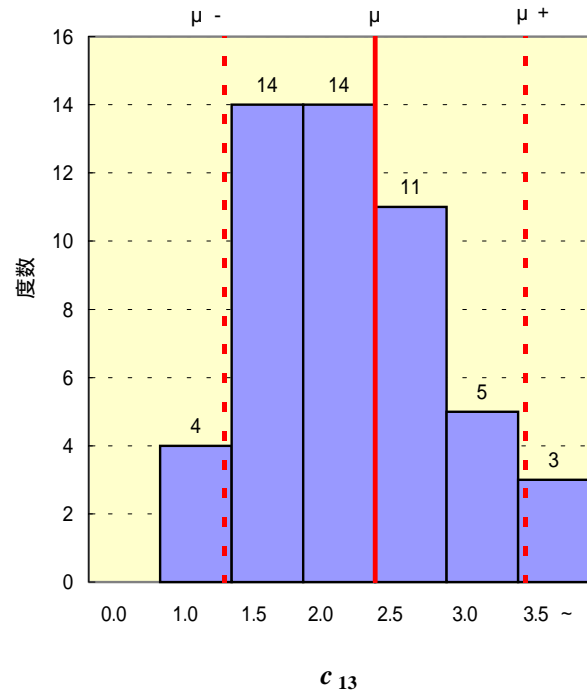
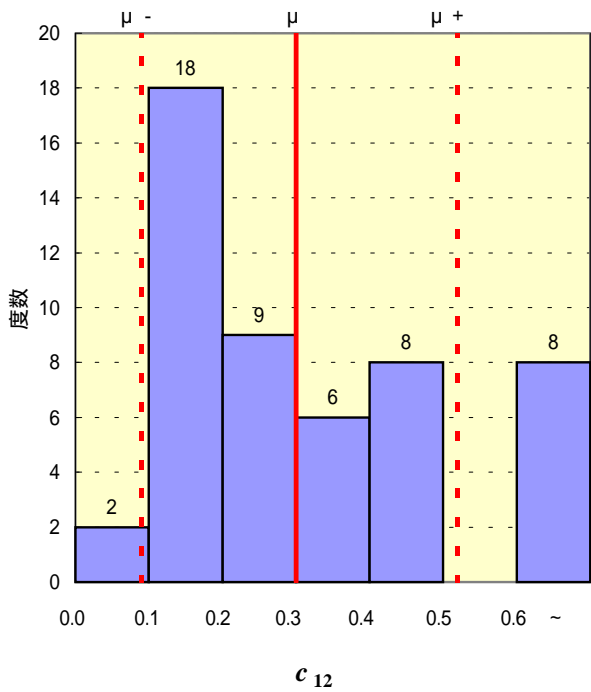
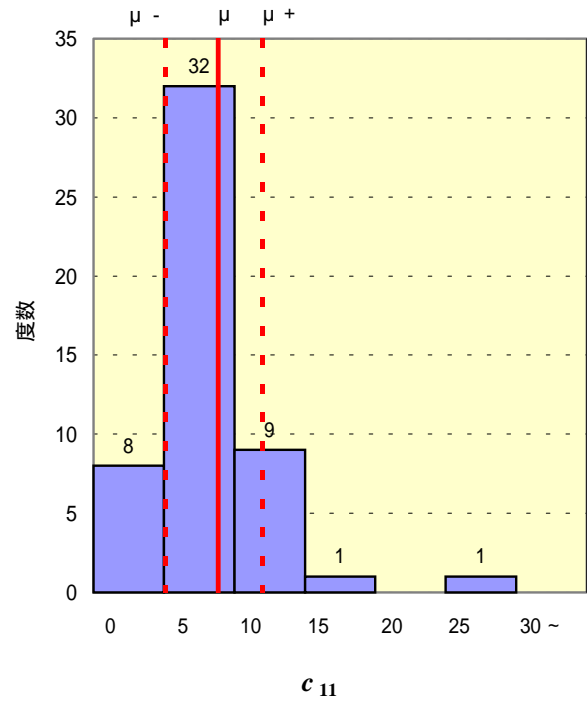
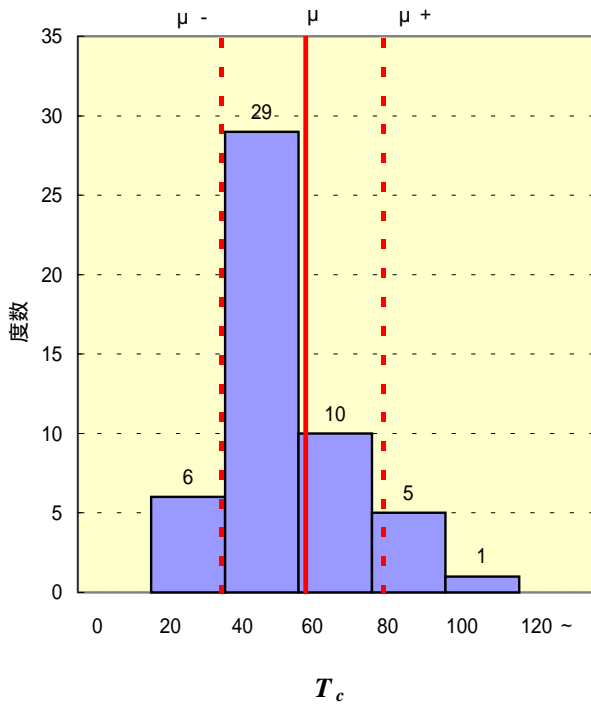


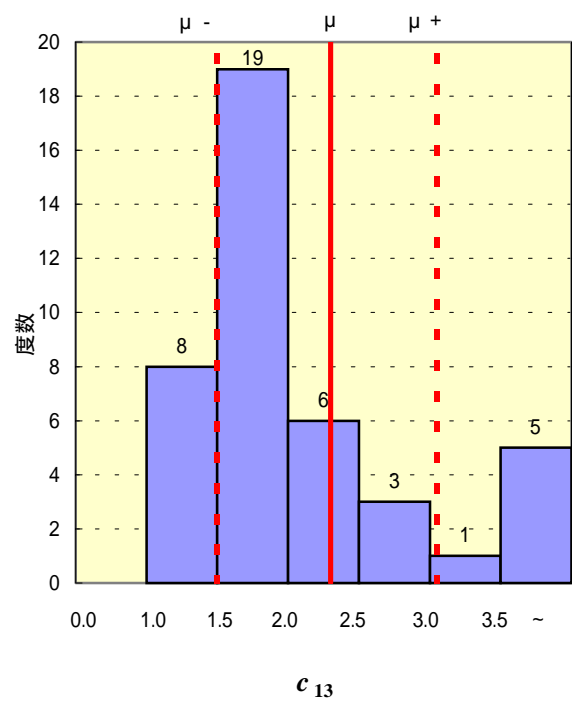
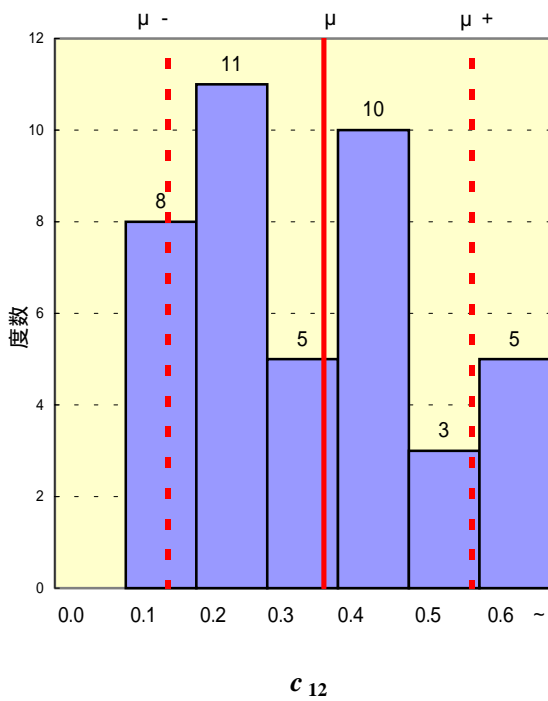
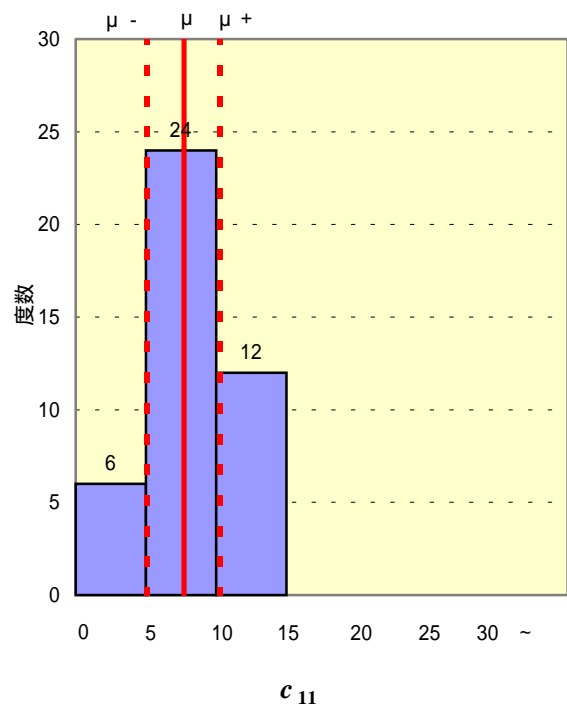
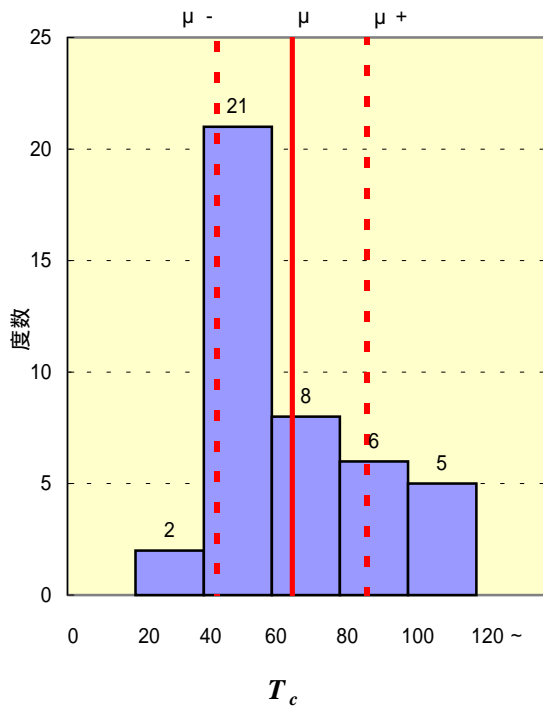
天塩川水系 (51洪水例)



2段タンク型モデル定数

図2.18 各水系におけるモデル定数度数分布

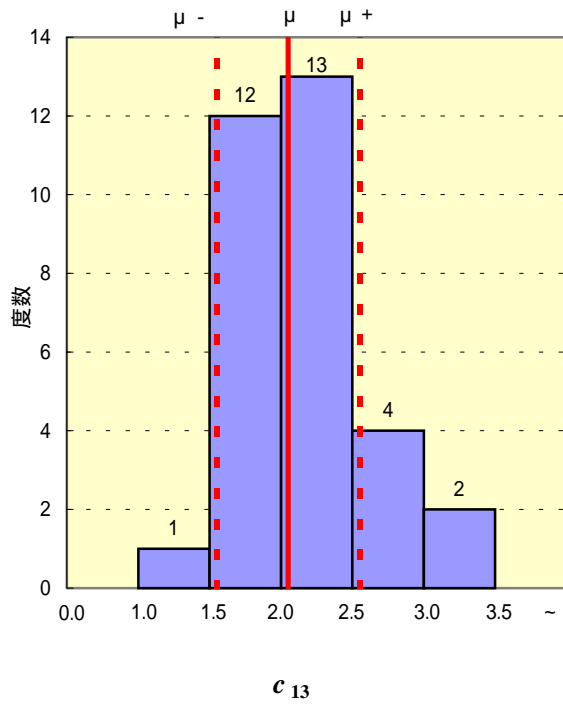
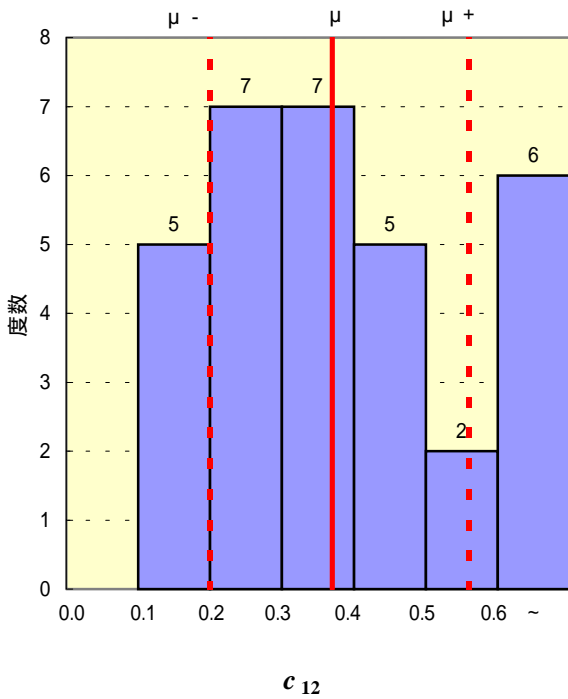
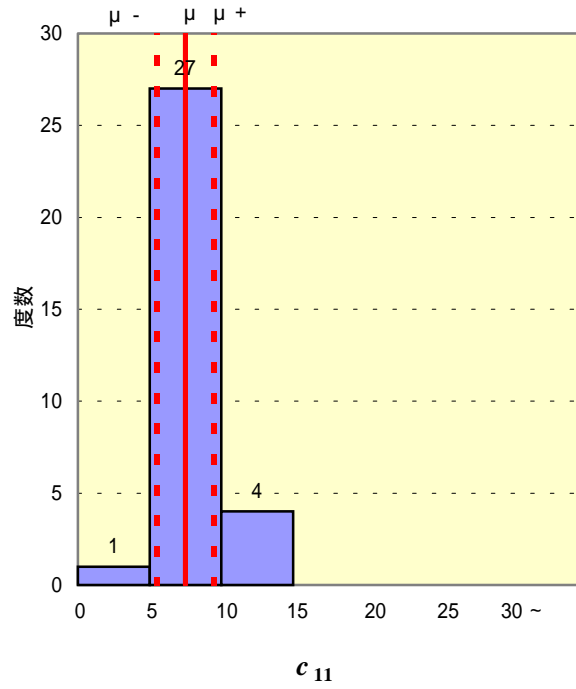
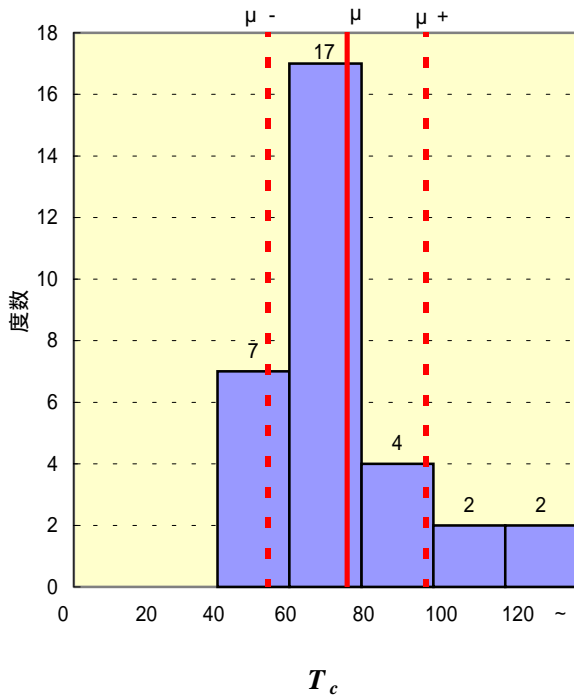
渚滑川水系 (42洪水例)



2段タンク型モデル定数

図2.18 各水系におけるモデル定数度数分布(つづき)

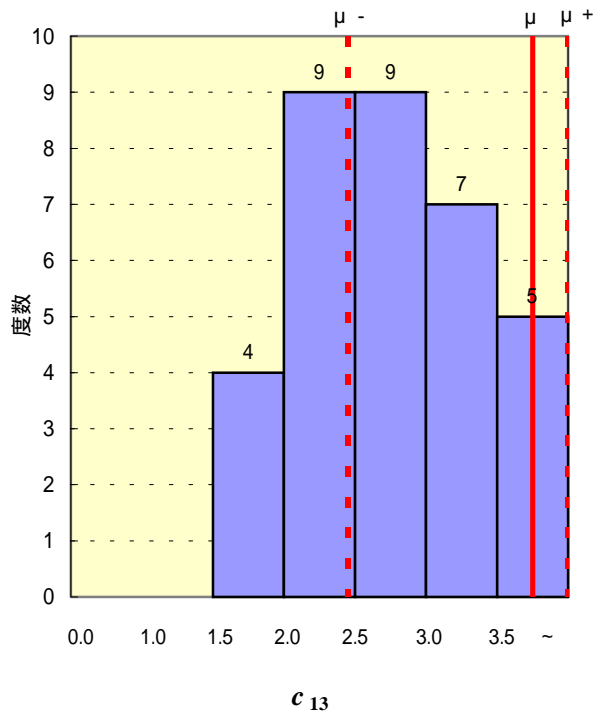
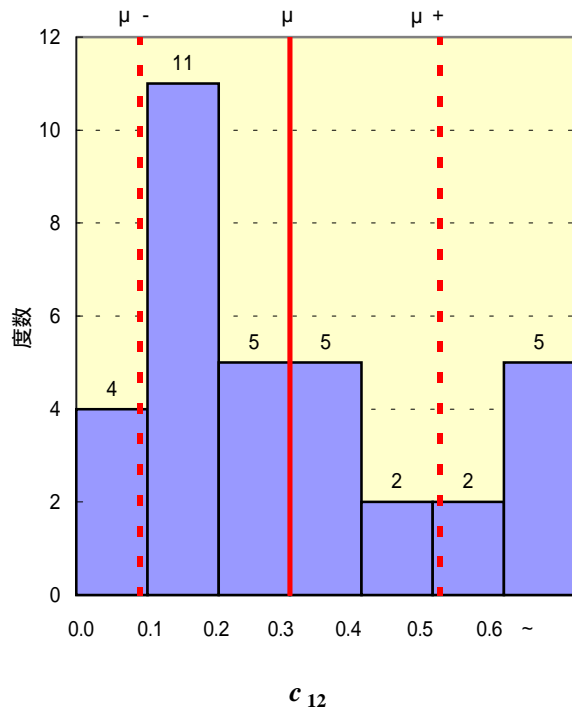
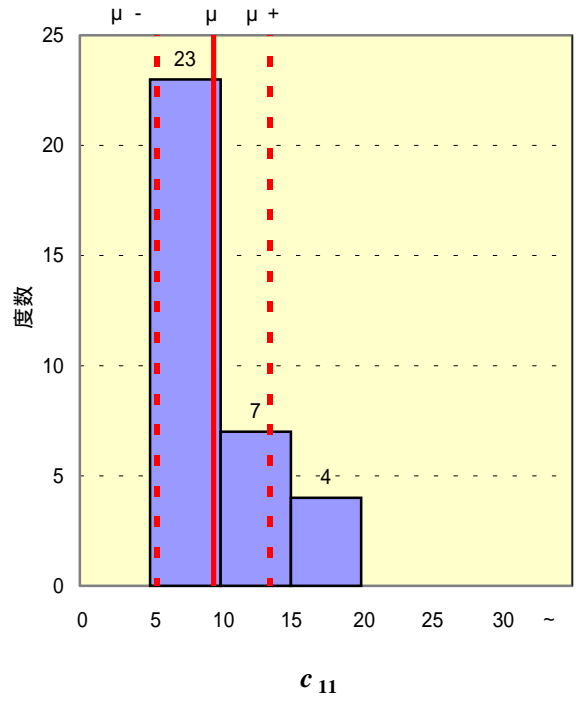
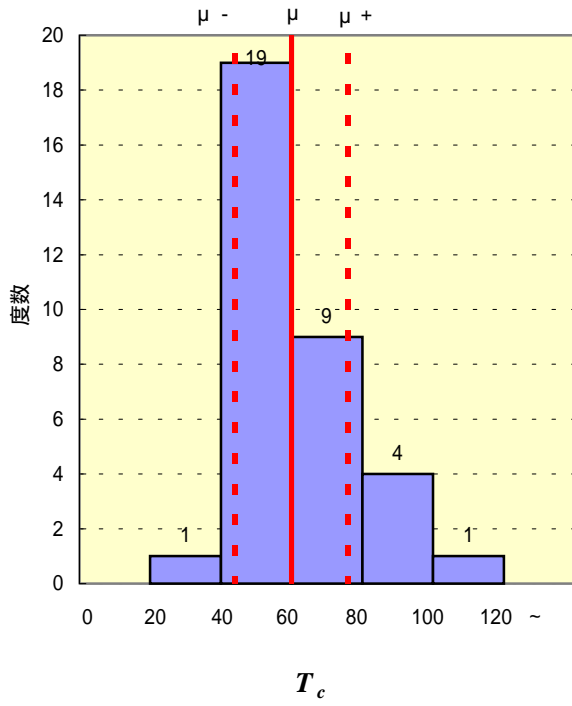
湧別川水系 (32洪水例)



2段タンク型モデル定数

図2.18 各水系におけるモデル定数度数分布(つづき)

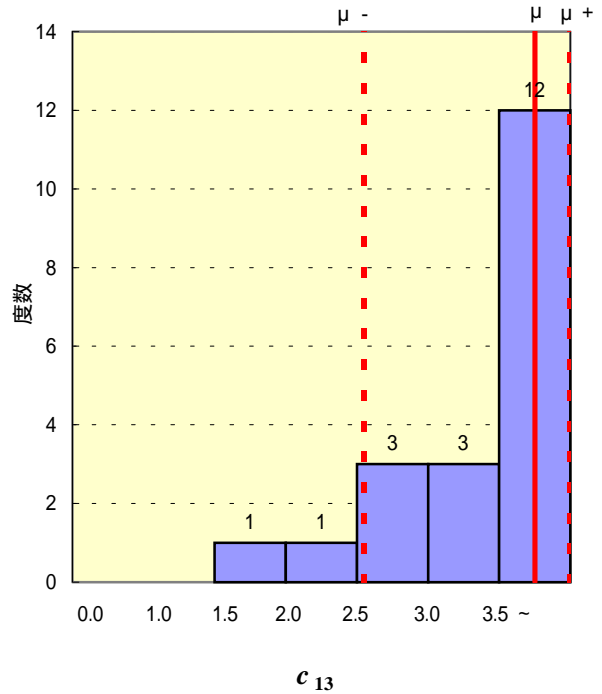
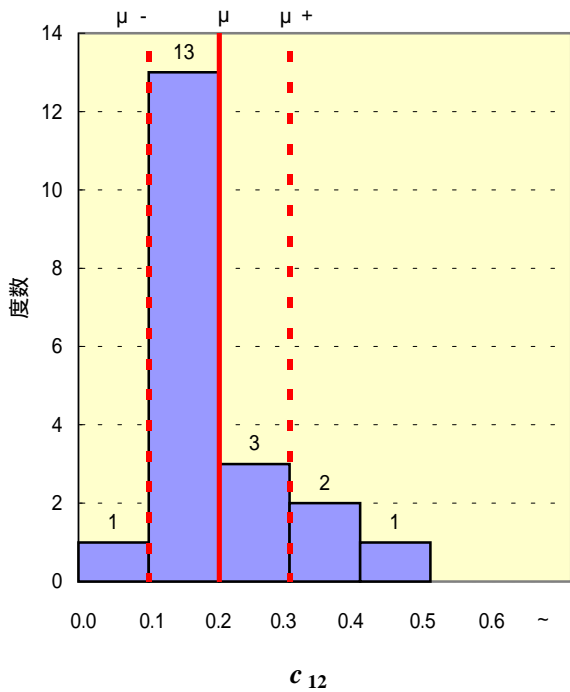
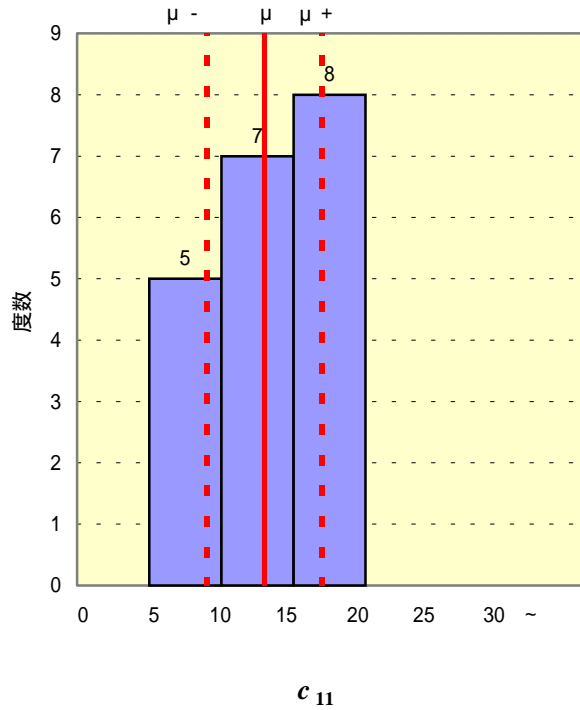
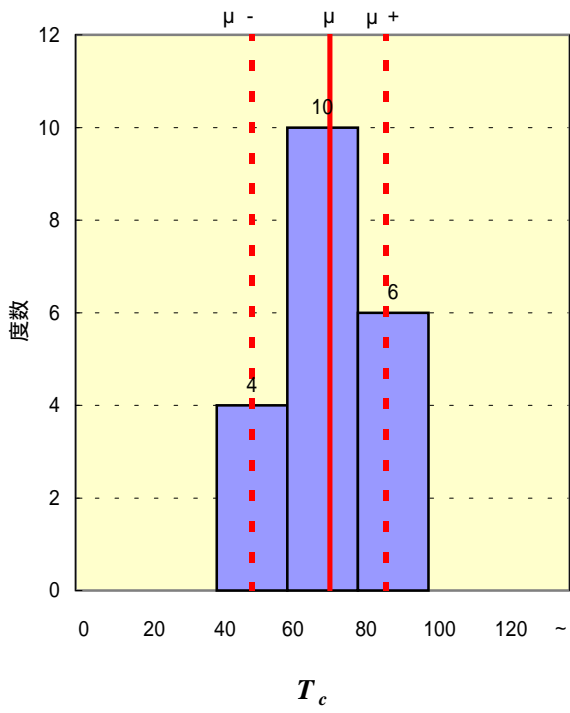
常呂川水系 (34洪水例)



2段タンク型モデル定数

図2.18 各水系におけるモデル定数度数分布(つづき)

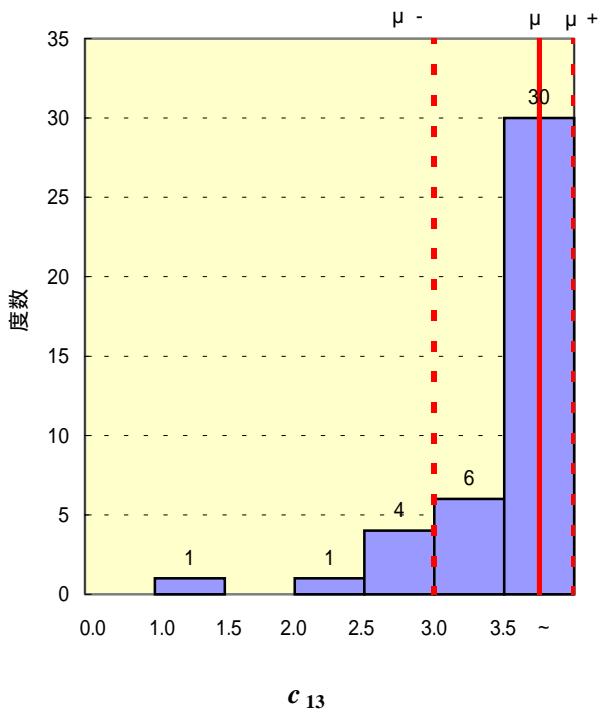
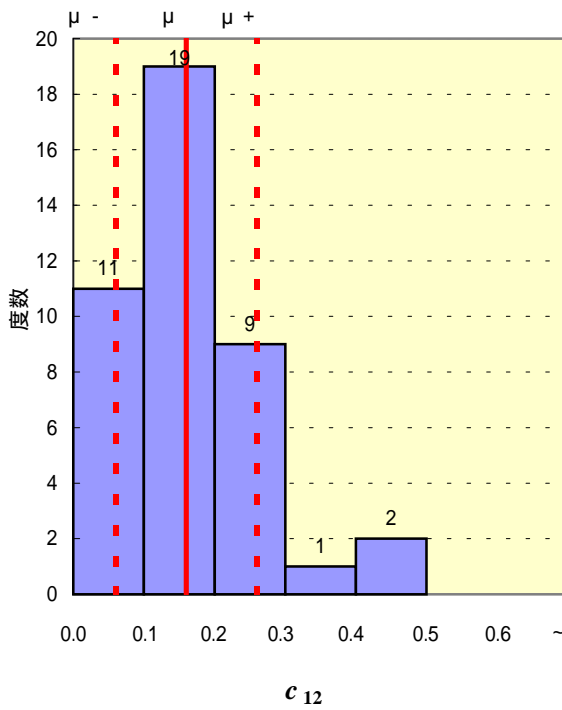
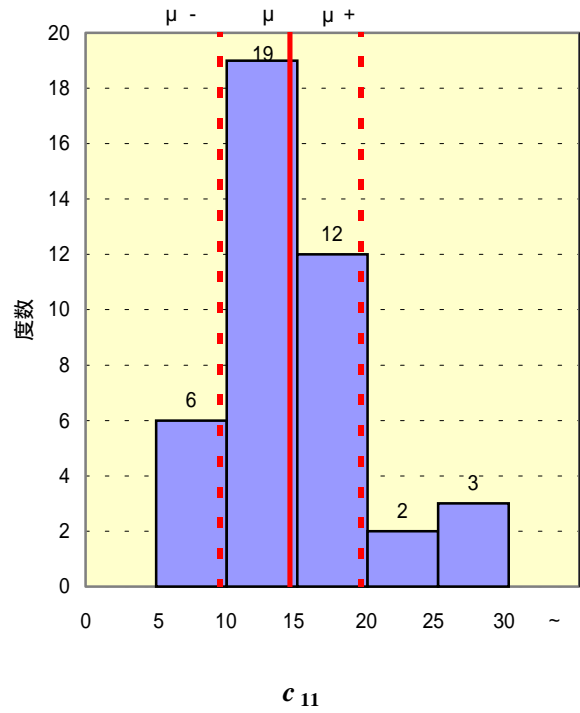
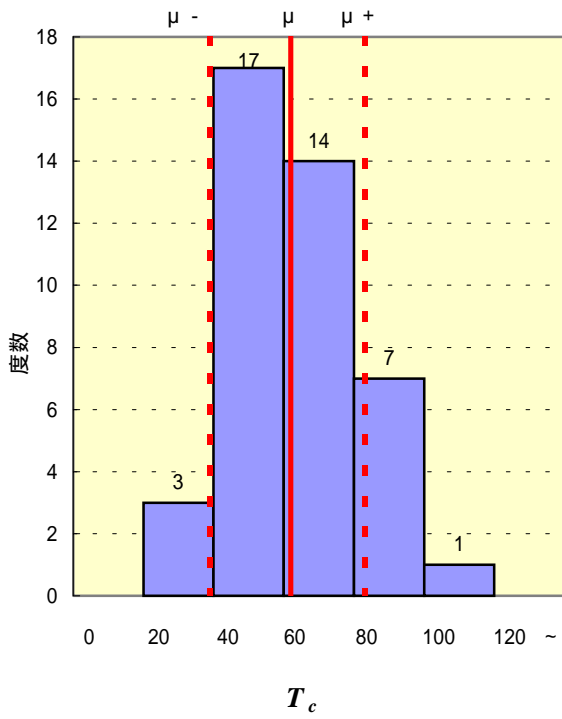
網走川水系 (20洪水例)



2段タンク型モデル定数

図2.18 各水系におけるモデル定数度数分布(つづき)

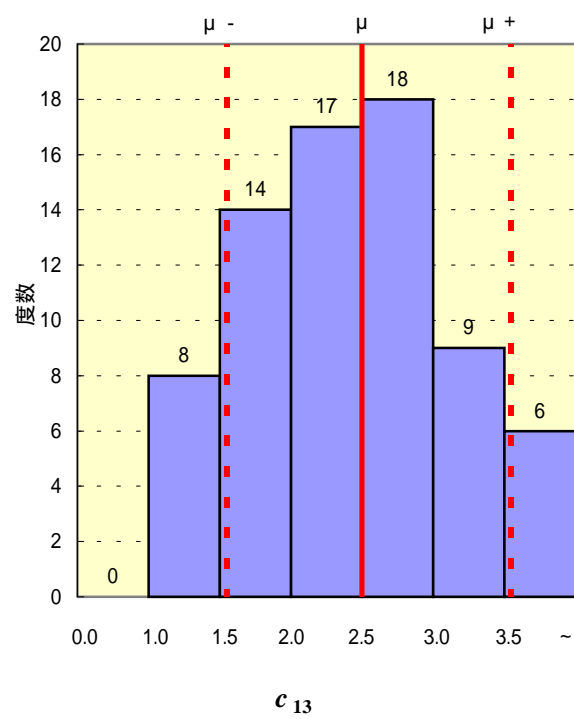
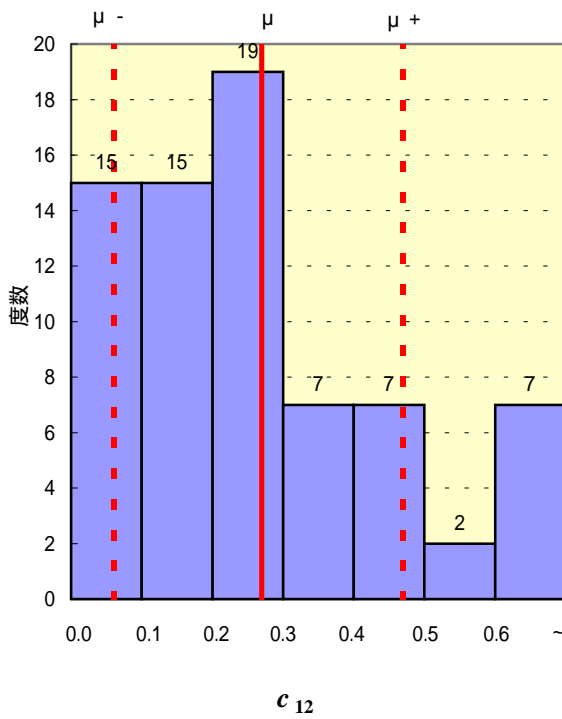
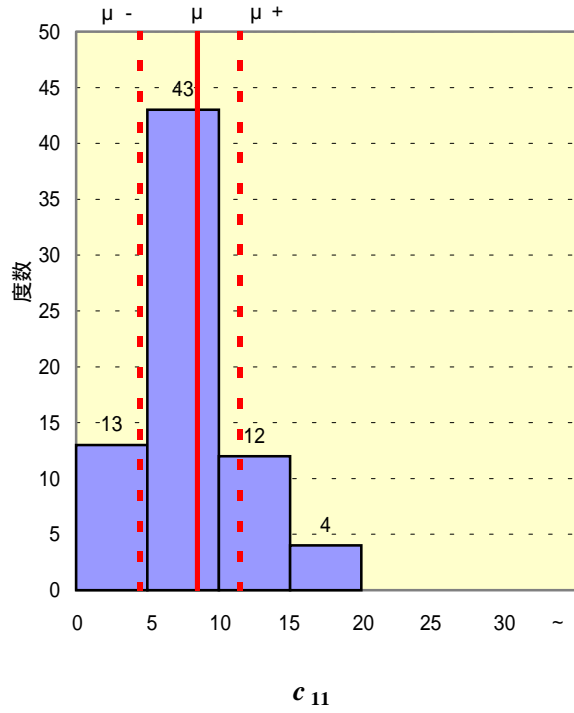
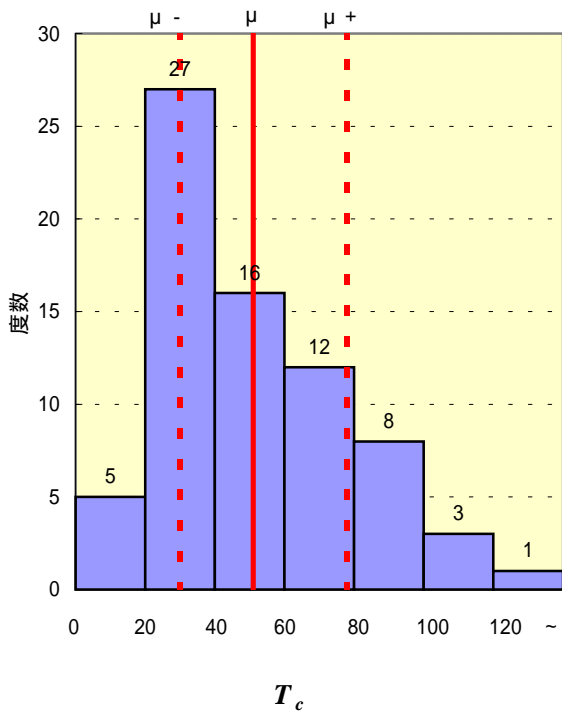
留萌川水系 (39洪水例)



2段タンク型モデル定数

図2.18 各水系におけるモデル定数度数分布(つづき)

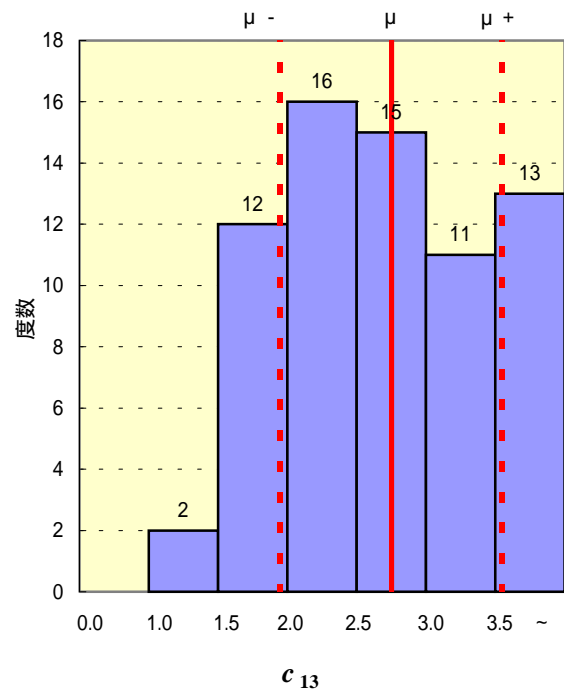
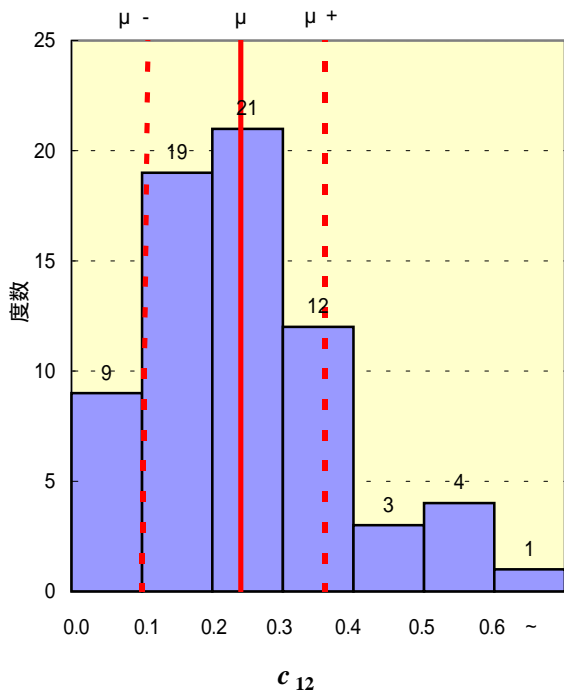
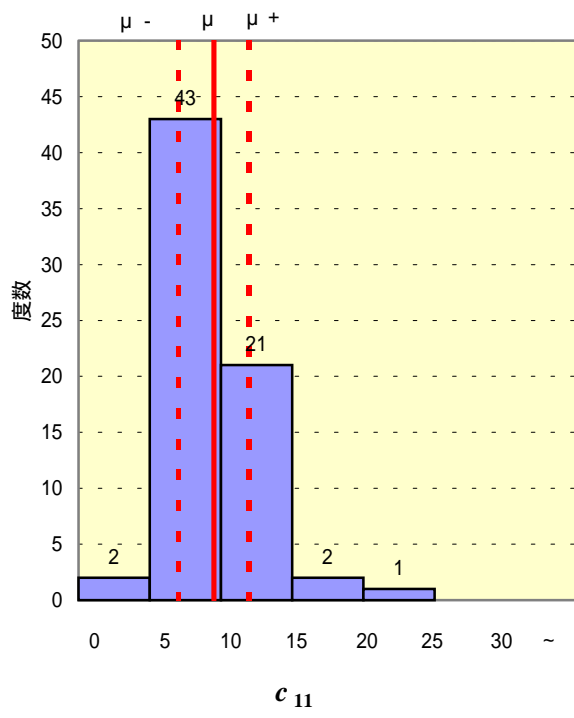
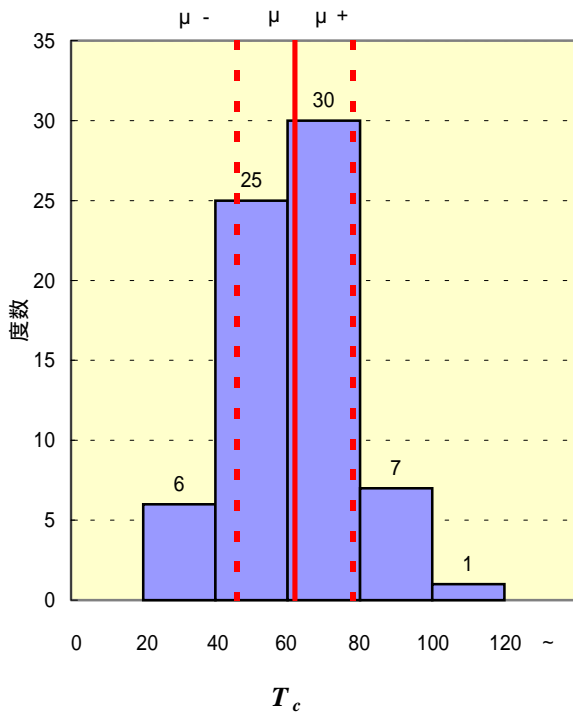
石狩川水系 (72洪水例)



2段タンク型モデル定数

図2.18 各水系におけるモデル定数度数分布(つづき)

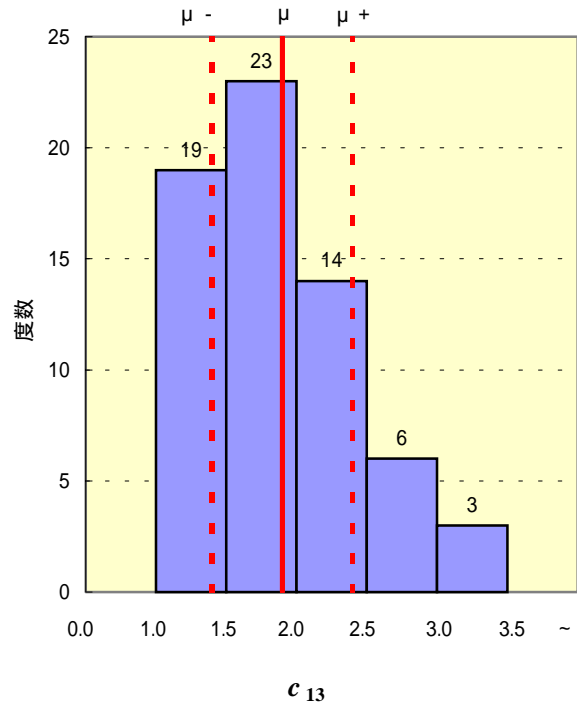
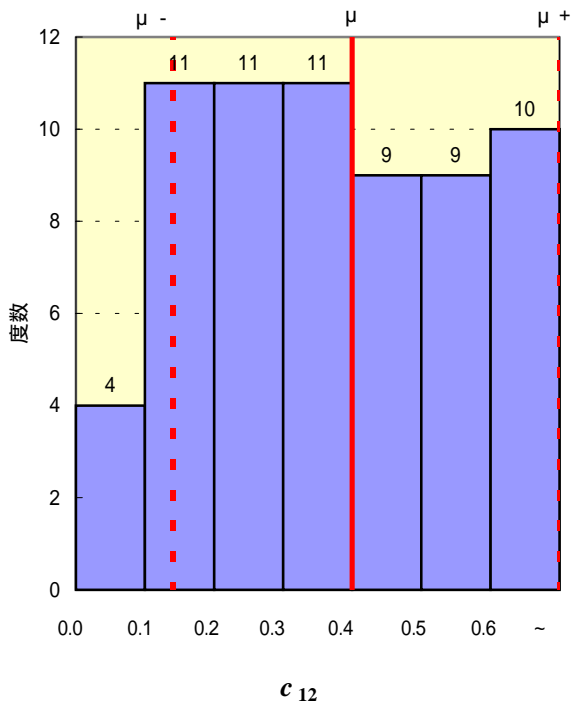
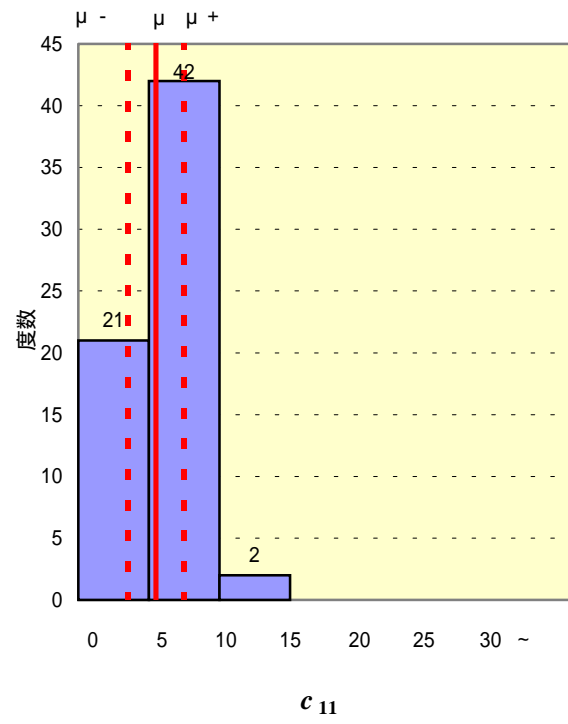
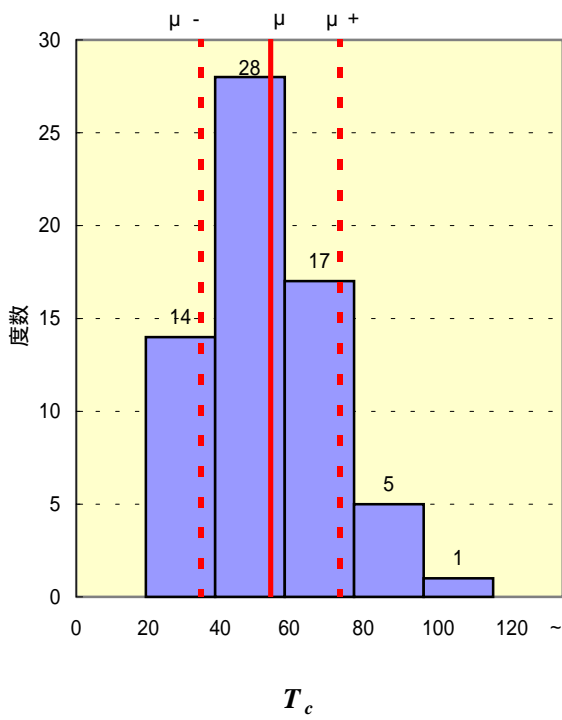
尻別川水系 (69洪水例)



2段タンク型モデル定数

図2.18 各水系におけるモデル定数度数分布(つづき)

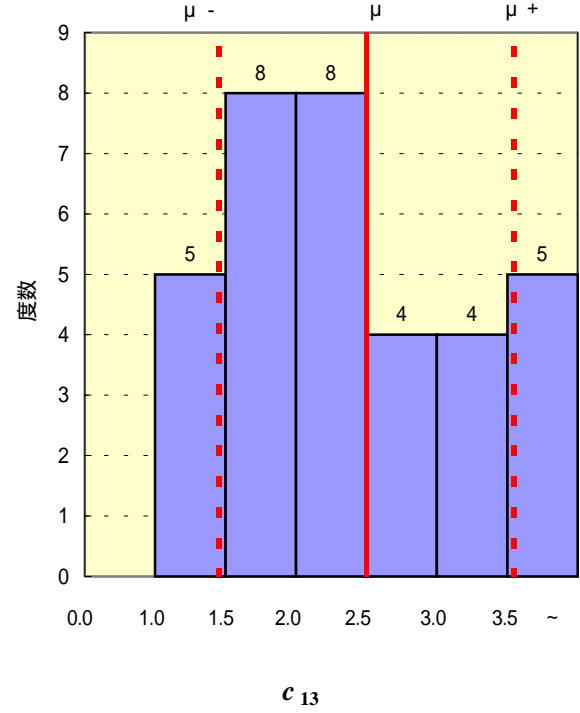
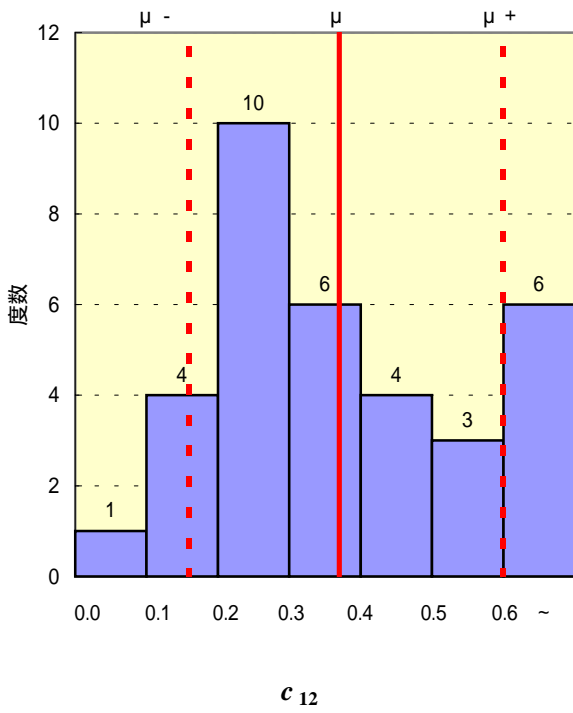
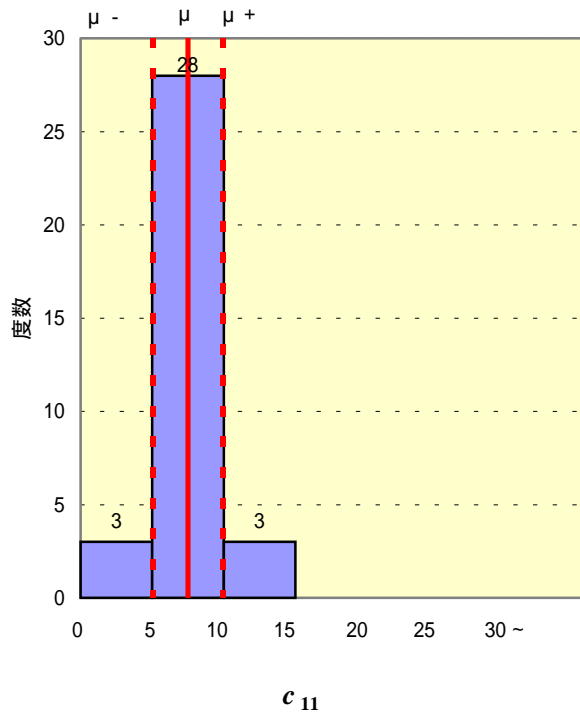
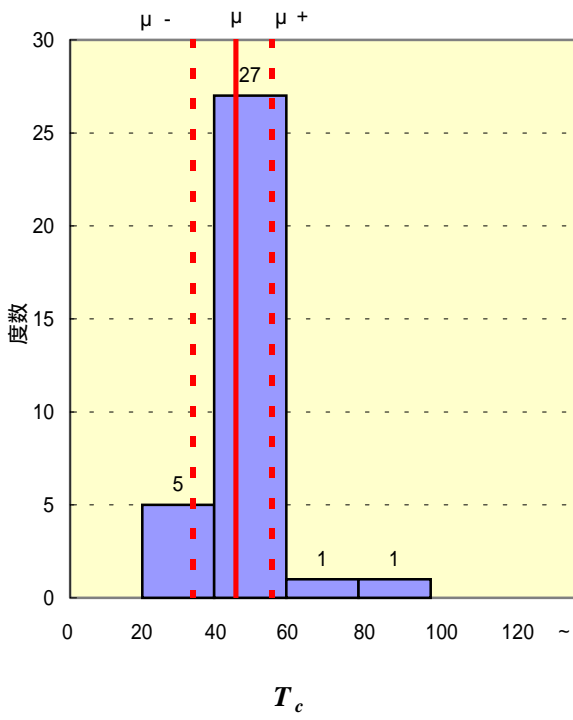
後志利別川水系 (65洪水例)



2段タンク型モデル定数

図2.18 各水系におけるモデル定数度数分布(つづき)

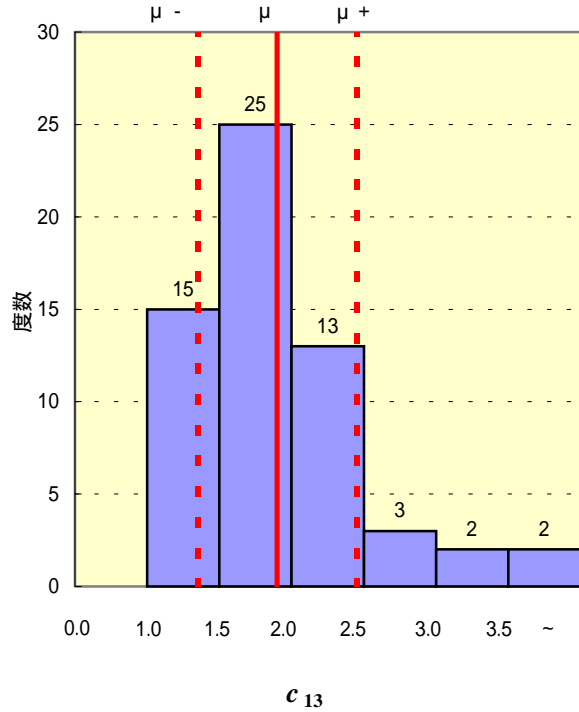
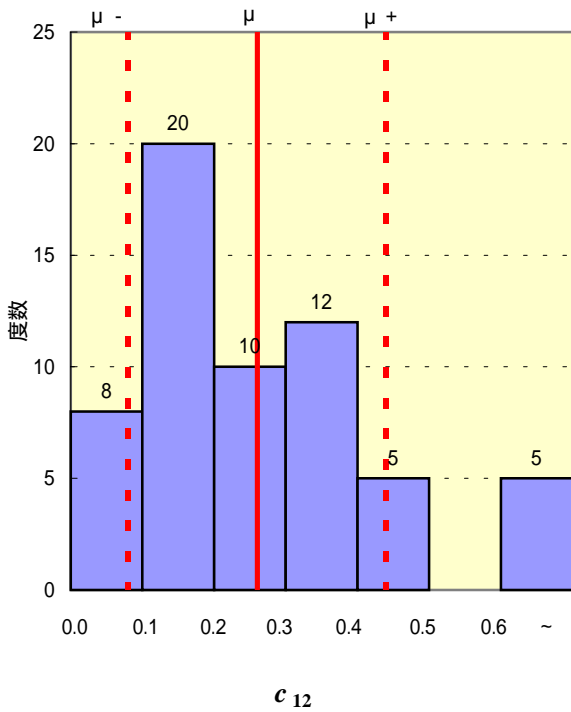
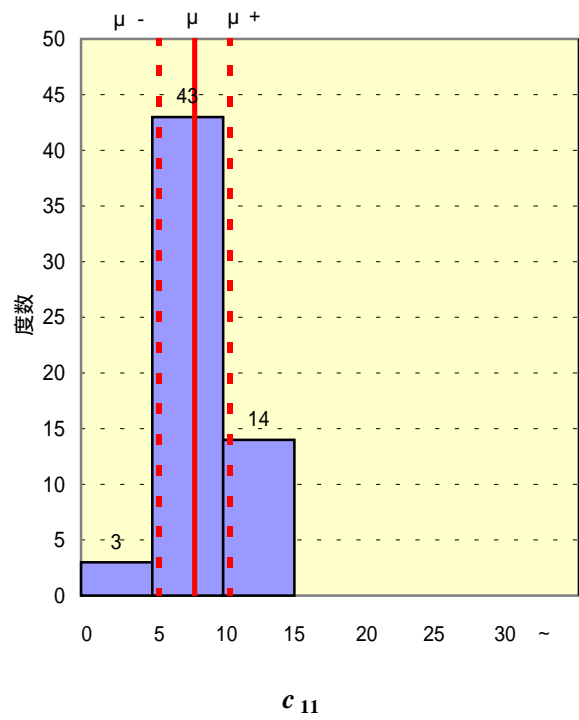
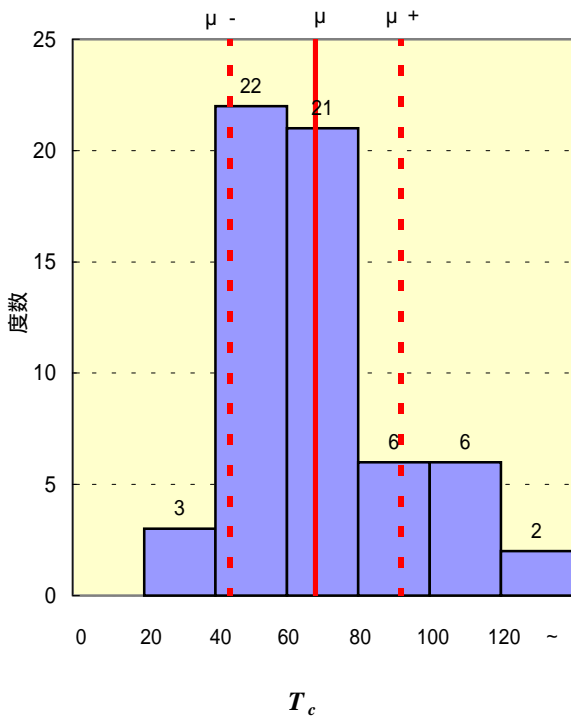
鶴川水系 (34洪水例)



2段タンク型モデル定数

図2.18 各水系におけるモデル定数度数分布(つづき)

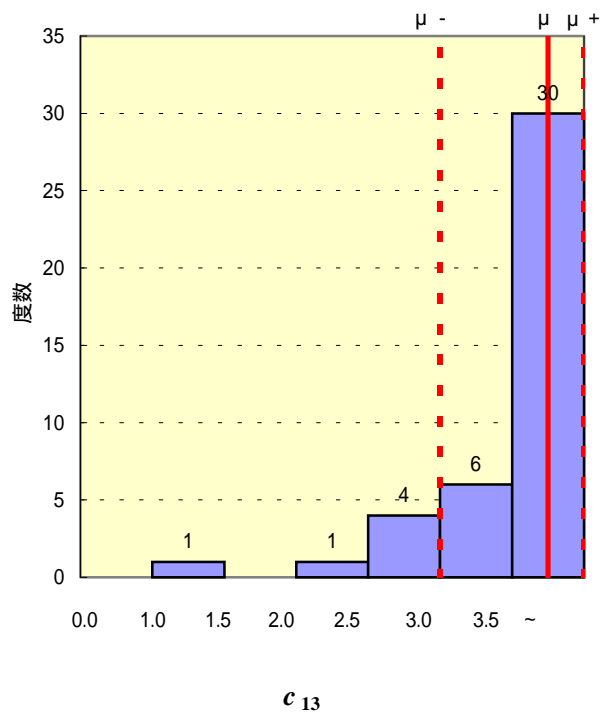
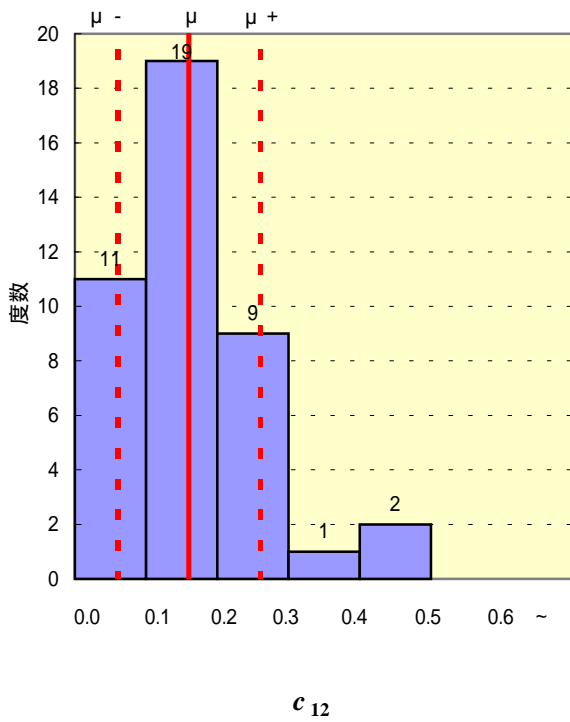
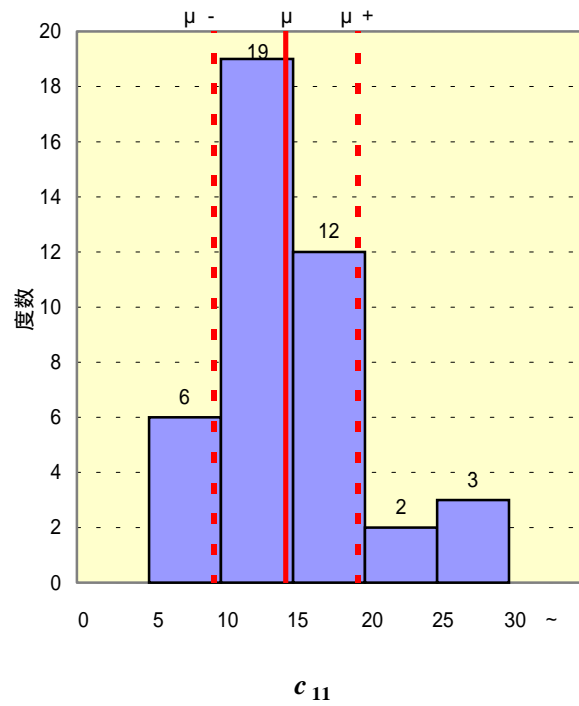
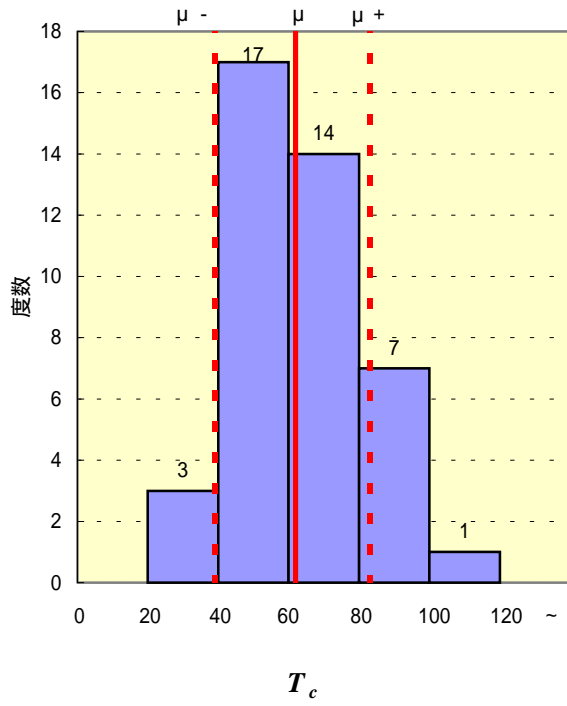
沙流川水系 (60洪水例)



2段タンク型モデル定数

図 2.18 各水系におけるモデル定数度数分布(つづき)

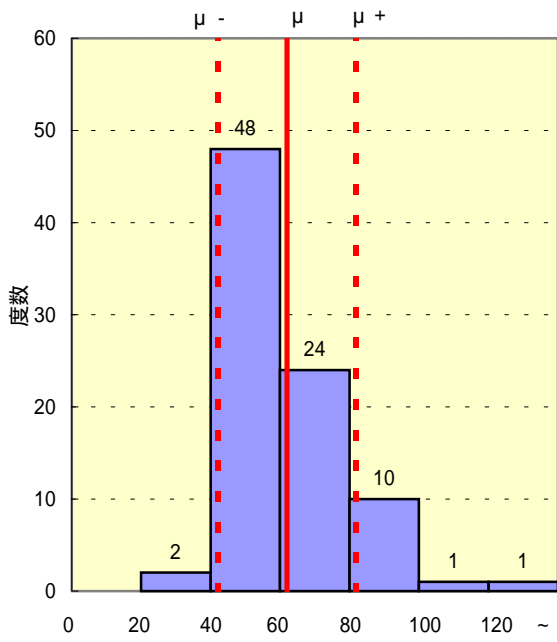
釧路川水系 (42洪水例)



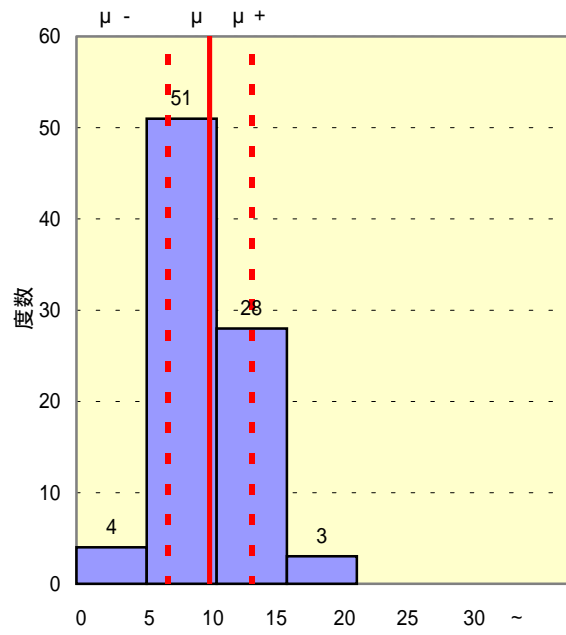
2段タンク型モデル定数

図2.18 各水系におけるモデル定数度数分布(つづき)

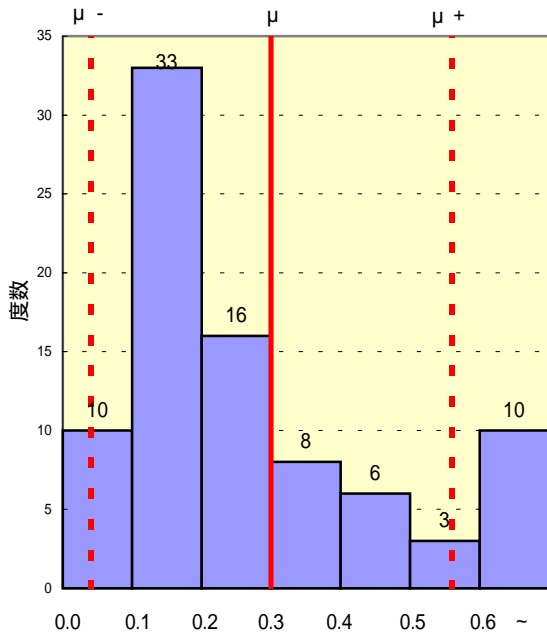
十勝川水系 (86洪水例)



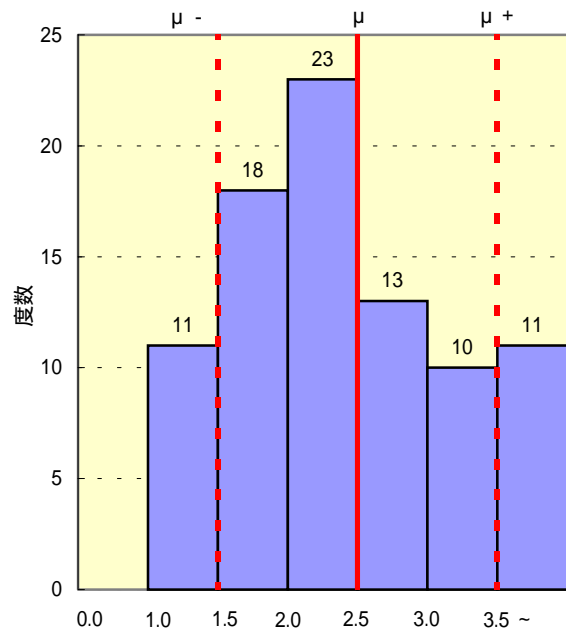
T_c



c_{11}



c_{12}



c_{13}

2段タンク型モデル定数

図2.18 各水系におけるモデル定数度数分布(つづき)